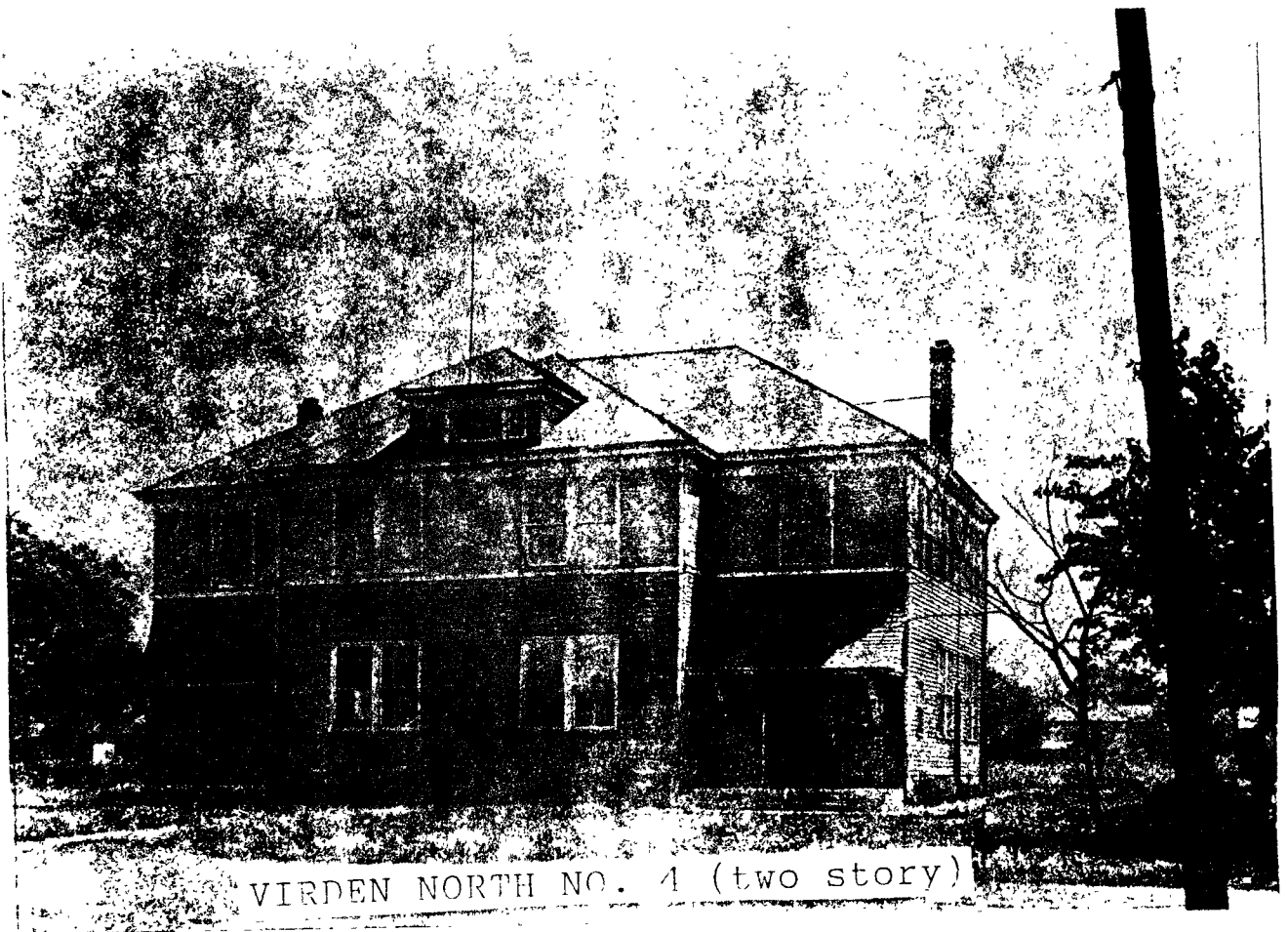


Virden Elementary

#4



Photographs courtesy of  
the Macoupin County  
Historical Society



Photographs courtesy of  
the Macoupin County  
Historical Society

LIST TEACHERS & SUPERVISORS (If more than 1 building, fill out by bldgs.)

Name of Teacher	No. mos. in sch. year	Annual salary	Grade taught	Enroll- ment	If grad- uate of Normal use N.	If grad- uate of College use C.
<i>North</i>						
Edna Alderson	9	990	7x8	175	—	—
Effe Munson	9	900	7x8	"	—	—
Ethel Hoppins	9	900	7x8	"	—	—
Mae Thomas	9	900	7x8	"	—	—
Matilda Mortimer	9	900	7x8	"	—	—
Myrtle Kessler	9	900	7x8	"	—	—
Sarah Thomas	9	900	1 <sup>st</sup>	25	—	—
Lillian Cave	9	855	3 <sup>rd</sup>	30	—	—
Madeline Hall	9	855	5 <sup>th</sup>	37	—	—
Helen Pitman	9	855	2 <sup>nd</sup>	33	—	—
<i>Central</i>						
Hannah Nicholson	9	955	1 <sup>st</sup>	19	—	—
Valette Billingsley	9	900	1 <sup>st</sup>	19	—	—
Hurietta Hill	9	855	2 <sup>nd</sup>	32	—	C
Lucile Mitchell	9	855	5 <sup>th</sup>	22	N	—
Stella West	9	855	3 <sup>rd</sup>	31	—	—
Ada Dykema	9	855	4 <sup>th</sup>	26	—	—
Arah Prosser	9	855	6 <sup>th</sup>	36	—	—
<i>East</i>						
Lily Cain	9	945	1 <sup>st</sup>	16	—	—
Gladya Key	9	855	6 <sup>th</sup>	15	—	—
Jessie Schofield	9	855	3 <sup>rd</sup>	17	—	—
Olive Beggs	9	855	6 <sup>th</sup>	17	—	—
Elizabeth Roughley	9	855	4 <sup>th</sup>	20	—	—
Helen Patton	9	765	5 <sup>th</sup>	37	—	—
Eleanor Hall	9	855	2 <sup>nd</sup>	24	—	—
Marion Arasund	9	1250	music		N	—

1923-24 Virden #4

estimated  
Virden #4  
faculty members  
from 1923-1927?

Edna Alderson  
Effe Munson  
Mae Thomas  
Matilda Mortimer  
Sarah Thomas  
Lillian Cave  
Hannah Nicholson  
Valette Billingsley  
Stella West  
Ada Dykema  
Eleanor (Arah?) Prosser  
Lily Cain  
Elizabeth Roughley  
(1924-25)

Names verified in  
Macoupin County  
School directories.

Myrtle Kessler  
Helen Pitman

TO BE FILLED OUT BY TEACHER OR PRINCIPAL IN CHARGE OF BUILDING

TEACHERS' ANNUAL REPORT

YEAR OF 1914-15

Name of School Public Schools Dist. No. 4 Macoupin County, Illinois.

2. Enrollment for the year by grades. (Do not count any pupil more than once.)

1st Yr.		2nd Yr.		3rd Yr.		4th Yr.		5t Yr.		6th Yr.		7th Yr.		8th Yr.		9th Yr.		10th Yr.		11th Yr.		12th Yr.	
Boys	Girls	Boys	Girls	Boys	Girls	Boys	Girls	Boys	Girls	Boys	Girls	Boys	Girls	Boys	Girls	Boys	Girls	Boys	Girls	Boys	Girls	Boys	Girls
103	116	82	67	75	68	72	73	69	84	54	51	38	29	28	23	15	22	5	14	8	25	8	10
Total: Elementary.....												521	511	Secondary (High).....								36	71

2a. How many of the above were enrolled in some other district of this State before enrolling in this district, during the year..... Boys 24 Girls 19 Total 43

3. Length of school year in months: nine Actual number of days school was in session: 184

4. Whole number of different persons employed as teachers in this building for the whole or part of the year and who have not been transferred from another building in this district..... Men 3 Women 22 Total 25

5. Number of eighth grade graduates or promotions..... Boys 18 Girls 21 Total 39

6. Number of elementary pupils paying tuition..... Boys 1 Girls 0 Total 1

7. Number of high school graduates..... Boys 6 Girls 9 Total 15

8. Number of high school tuition pupils..... Boys 5 Girls 15 Total 20

9. Administrative officers (does not apply to one-room districts):  
(a) Superintendents who do no teaching..... Men 0 Women 0 Total 0

(b) Principals and Supervisors who teach less than half time..... Men 1 Women 0 Total 1

10. Teachers and principals who teach half time or more (if more than one person has taught in a room only count the one teaching the longer part of the term)..... Men 2 Women 22 Total 24

11. Total number of teaching positions (sum of 9 and 10) (show only the actual positions)..... Men 3 Women 22 Total 25

12. Qualifications of teachers: Number graduates of a College and State Normal School? 0 A College only? 4  
A Normal School only? 0 A four-year High School only? 16 If not a graduate, how many have attended a college?  
3 A State Normal School? 13 A High School? 2  
(Give only highest graduation or attendance of each teacher at work at end of term. The total must not be more than No. 11 above.)

13. Amount of annual salary earned by teachers: Men, \$ 3085; Women, \$ 9900; Total, \$ 12985  
(If a position has been held by more than one person, give as annual salary the sum earned by all for the sex holding the position longest.)

14. Total days' attendance of all pupils enrolled..... 160777

16. Number of school houses:..... Public 4 Rented 1 Total 5

17. Number of sittings for study (capacity) (double seats to be counted as two sittings)..... 1271

18. Value of school property:  
(a) Sites and buildings..... \$ 40000.00  
(b) Equipment (furniture, library, apparatus, etc.)..... \$ 2500.00  
Total..... \$ 42500.00

19. Give length of service in this district of teachers holding positions at close of school: 1 yr.? 8 2 yrs.? 4  
3 yrs.? 3 4 yrs.? 1 5 yrs.? 2 6 yrs.? 2 7 yrs.? 1 8 yrs.? 1 9 yrs.? 0  
10 yrs.? 1 11 yrs.? 1 12 yrs.? 0 13 yrs.? 0 14 yrs.? 0 15 yrs.? 0 16 yrs.? 0  
17 yrs.? 0 18 yrs.? 0 19 yrs.? 0 20 yrs. or more? 1 (Count part of a year as a year.)

20. Promotion of health: Number of nurses employed? 0 Physicians? 0 Amount paid nurses? Physicians?  
Number of pupils examined for physical defects or contagion? Number found affected? Number of homes visited by nurse or inspecting officer?

Promotion of attendance: Number of truant officers employed? Men? Women? Amount paid truant officers?  
Number of children not attending school between the ages of 7 and 14? 14 and 16? Number of children arrested and placed in charge of teacher? Number sentenced by a court to a delinquent school? Number of school and age certificates issued? 2

21. Amount of all taxes levied for school purposes, made August 1914..... \$ 16000

22. Amount of bonded indebtedness, July 1, 1915..... \$ 24000

23. Number of volumes in library exclusive of supplementary reading books for class use..... 441

24. Number of private schools in the district? 0 Number of teachers employed? Men? Women? Number of pupils enrolled in elementary grades (1st to 8th): Boys? Girls? Secondary Grades (9th to 12th): Boys? Girls? College Grades (13th to 16th): Boys? Girls?

25. Number of persons between the ages of 12 and 21 who are unable to read and write: Boys No data Girls No data Total

26. Have you any departmental teaching below the high school? No If so, which years?

27. Amount of endowment or permanent fund belonging to this district..... \$ 00  
(If you are unable to obtain the information called for in questions 18, 21, 22, 25 and 27 readily, let the items remain blank.)

29. SALARIES OF TEACHERS.

Enter in the following table the number of teachers in day schools paid the different annual salaries.

ELEMENTARY					SECONDARY				
ELEMENTARY					SECONDARY				
SALARIES	Men	Women	Men	Women	SALARIES	Men	Women	Men	Women
Less than \$200.....					\$1,200 to \$1,299 .....				
\$200 to \$299.....					\$1,300 to \$1,399.....				
\$300 to \$399.....		1			\$1,400 to \$1,499.....				
\$400 to \$499.....		18			\$1,500 to \$1,599.....				
\$500 to \$599.....					\$1,600 to \$1,699.....			1	
\$600 to \$699.....				1	\$1,700 to \$1,799.....				
\$700 to \$799.....	1		1	2	\$1,800 to \$1,899.....				
\$800 to \$899.....					\$1,900 to \$1,999.....				
\$900 to \$999.....					\$2,000 to \$2,499.....				
\$1,000 to \$1,099.....					\$2,500 to \$2,999.....				
\$1,100 to \$1,199.....					\$3,000 and over.....				
Total (same as Item 11).....						1	19	2	3

NOTICE.

Make out this report in duplicate, except in districts having two or more buildings and a superintendent, and file one copy with the clerk of the school board to be filed with the township treasurer, and mail the other copy to the county superintendent at the close of school.

In districts having two or more buildings and a superintendent, only one copy is to be made by the Principal of each building and filed with the Superintendent, who is to consolidate the several reports and make one copy for the Clerk of the school board to be filed with the township treasurer, and one to be mailed to the County Superintendent at the close of school.

Teachers' Annual Report

FOR *Public* School *3*

Dist. No. *4* *Marengo* County, Illinois, for school year ending June 30, 1915.

School closed *May 31*, 1915.

Made by *Clyde Stone, Supt.* Teacher or Principal

Filed *June 5*, 1915. Clerk or Co. Supt. *H. W. S.*

ILLINOIS PRINTING CO., DANVILLE, ILL.

TO BE FILLED OUT BY TEACHER OR PRINCIPAL IN CHARGE OF BUILDING

## TEACHERS' ANNUAL REPORT

YEAR OF 1915-16

Name of School Urden Public Schools Dist. No. 4 Macoupin County, Illinois.

1. School census:

All Under 21 Years of Age.		
Boys	Girls	Total
1037	960	1997

All Between 6 and 21 Years of Age.		
Boys	Girls	Total
706	693	1399

Date of Census:

June 7, 1916

## Elementary

	Kindergarten		1st Yr.		2nd Yr.		3rd Yr.		4th Yr.		5th Yr.		6th Yr.		7th Yr.		8th Yr.		Total	
	Boys	Girls	Boys	Girls	Boys	Girls	Boys	Girls	Boys	Girls	Boys	Girls	Boys	Girls	Boys	Girls	Boys	Girls	Boys	Girls
Enrollment			98	118	65	79	65	64	84	84	65	65	60	61	45	43	23	22	505	536

## Secondary (High)

	9th Yr.		10th Yr.		11th Yr.		12th Yr.		Total		Grand Total	
	Boys	Girls	Boys	Girls	Boys	Girls	Boys	Girls	Boys	Girls	Boys	Girls
Enrollment	20	24	10	21	3	7	8	24	41	76	546	612

- 2a. How many of the above were enrolled in some other district of this State before enrolling in this district, during the year..... Boys 14 Girls 19 Total 33
3. Length of school year in months: 9 Actual number of days school was in session: 184
4. Number of vacancies caused by death? 0 Resignation, etc.? 2 Change of teachers for spring term? 0 Total 2
5. Number of eighth grade graduates or promotions..... Boys 15 Girls 18 Total 33
6. Number of elementary tuition pupils attending this school..... Boys 0 Girls 0 Total 0
7. Number of high school graduates..... Boys 5 Girls 21 Total 26
8. Number of high school tuition pupils attending this school..... Boys 4 Girls 16 Total 20
9. Administrative officers (does not apply to one-room districts):
- (a) Superintendents who do no teaching..... Men 0 Women 0 Total 0
- (b) Principals and Supervisors who teach less than half time..... Men 1 Women 0 Total 1
10. Teachers and principals who teach half time or more (if more than one person has taught in a room only count the one teaching the longer part of the term)..... Men 3 Women 22 Total 25
11. Total number of teaching positions (sum of 9 and 10) (show only the actual positions)..... Men 4 Women 22 Total 26
12. Qualifications of teachers: Number graduates of a College and State Normal School?..... A College only? 4  
A Normal School only?..... A four-year High School only?..... If not a graduate, how many have attended a college? 2  
A State Normal School? 19 A High School? 1  
(Give only highest graduation or attendance of each teacher at work at end of term. The total must not be more than No. 11 above.)
13. Amount of annual salary earned by teachers: Men, \$ 3787.32; Women, \$ 10024.82; Total, \$ 13812.14  
(If a position has been held by more than one person, give as annual salary the sum earned by all for the sex holding the position longest.)
14. Total days' attendance of all pupils enrolled..... 168644
15. Number of teachers contributing to the Illinois State Teacher's Pension and Retirement Fund..... 2 Total amount contributed \$10.00
16. Number of school houses:..... 5 Public..... 5 Rented..... 0 Total..... 5
17. Number of sittings for study (capacity) (double seats to be counted as two sittings)..... 1149
18. Value of school property:
- (a) Sites and buildings..... \$ 57208.00
- (b) Equipment (furniture, library, apparatus, etc.)..... 2766.77
- Total..... \$ 59974.87
19. Give length of service in this district of teachers holding positions at close of school: 1 yr. 6 2 yrs. 3  
3 yrs. 3 4 yrs. 5 5 yrs. 1 6 yrs. 2 7 yrs. 1 8 yrs. 1 9 yrs. 1  
10 yrs. 1 11 yrs. 1 12 yrs. 1 13 yrs. 1 14 yrs. 1 15 yrs. 1 16 yrs. 1  
17 yrs. 1 18 yrs. 1 19 yrs. 1 20 yrs. or more? 1 (Count part of a year as a year.)
20. Promotion of health: Number of nurses employed? 0 Physicians? 0 Amount paid nurses? 1 Physicians? 1  
Number of pupils examined for physical defects or contagion? 0 Number found affected? 0 Number of homes visited by nurse or inspecting officer? 0
- Promotion of attendance: Number of truant officers employed? 0 Men? 0 Women? 0 Amount paid truant officers? 1  
Number of children not attending school between the ages of 7 and 14? 8 14 and 16? 0 Number of children arrested and placed in charge of teacher? 0 Number sentenced by a court? 0 Number of school and age certificates issued? 3
21. Amount of all taxes levied for school purposes, made August 1915..... \$ 21000
22. Amount of bonded indebtedness, July 1, 1916..... \$ 22500
23. Number of volumes in library exclusive of supplementary reading books for class use..... 523
24. Number of private schools in the district? 1 Number of teachers employed? 1 Men? 0 Women? 1 Number of pupils enrolled in elementary grades (1st to 8th): Boys? 5 Girls? 5 Secondary Grades (9th to 12th): Boys? 0 Girls? 0 College Grades (13th to 16th): Boys? 0 Girls? 0
25. Number of persons between the ages of 12 and 21 who are unable to read and write: Boys 0 Girls 3 Total 3
26. Have you any departmental teaching below the high school? No If so, which years?.....
27. Amount of endowment or permanent fund belonging to this district (not township fund)..... \$ nothing  
(If you are unable to obtain the information called for in questions 1, 18, 21, 22, 25 and 27 readily, let the items remain blank.)

(OVER)

29. SALARIES OF TEACHERS.

Enter in the following table the number of teachers in day schools paid the different annual salaries.

SALARIES	ELEMENTARY		SECONDARY		SALARIES	ELEMENTARY		SECONDARY	
	Men	Women	Men	Women		Men	Women	Men	Women
Less than \$200					\$1,200 to \$1,299				
\$200 to \$299					\$1,300 to \$1,399				
\$300 to \$399		1			\$1,400 to \$1,499				
\$400 to \$499		19			\$1,500 to \$1,599				
\$500 to \$599					\$1,600 to \$1,699			1	
\$600 to \$699					\$1,700 to \$1,799				
\$700 to \$799			1	2	\$1,800 to \$1,899				
\$800 to \$899			1		\$1,900 to \$1,999				
\$900 to \$999					\$2,000 to \$2,499				
\$1,000 to \$1,099					\$2,500 to \$2,999				
\$1,100 to \$1,199					\$3,000 and over				
Total (same as Item 11)						1	20	3	2

NOTICE.

DISTRICTS OF ONE BUILDING—Make out this report in duplicate, and file one copy with the clerk of the school board to be filed with the township treasurer, and mail the other copy to the county superintendent at the close of school.

IN OTHER DISTRICTS—In districts having two or more buildings and a superintendent, only one copy is to be made by the principal of each building and filed with the superintendent, who is to consolidate the several reports and make one copy for the clerk of the school board to be filed with the township treasurer, and one to be mailed to the county superintendent at the close of school.

Teachers' Annual Report

FOR  
Virden Public School  
Dist. No. 4 Macoupin County,  
Illinois, for school year ending June 30, 1916.  
Building is in Township 12 Range 6, W.

School Closed June 9, 1916.  
Made by Clyde Elam, Supt.  
Teacher or Principal.  
Virden, Ill. P. O.

Filed 1916.  
Clerk or Co. Supt.

ILLINOIS PRINTING CO., DANVILLE, ILL.



To be filled out in duplicate by Teacher or Principal in charge of building and both copies filed with the County Superintendent at the close of school

TEACHERS' ANNUAL REPORT

YEAR OF 1916-17

Name of School: Urbain Dist. No. 4 Macoupin County, Illinois.

\*1. School census:

All Under 21 Years of Age.		
Boys	Girls	Total
1065	993	2058

All Between 6 and 21 Years of Age.		
Boys	Girls	Total
702	678	1380

Date of Census: June 1, 1917

Elementary

08

Kindergarten		1st Yr.		2nd Yr.		3rd Yr.		4th Yr.		5th Yr.		6th Yr.		7th Yr.		8th Yr.		Total	
Boys	Girls	Boys	Girls	Boys	Girls	Boys	Girls	Boys	Girls	Boys	Girls	Boys	Girls	Boys	Girls	Boys	Girls	Boys	Girls
		108	91	71	83	74	69	66	55	77	67	47	59	45	55	23	33	514	512

Secondary (High)

9th Yr.		10th Yr.		11th Yr.		12th Yr.		Total		Grand Total	
Boys	Girls	Boys	Girls	Boys	Girls	Boys	Girls	Boys	Girls	Boys	Girls
22	24	12	9	5	14	6	10	45	57	559	569

- 2a. How many of the above were enrolled in some other district of this State before enrolling in this district, during the year. Boys 27 Girls 18 Total 45
3. Length of school year in months: grades 8-12; H.S. 9 Actual number of days school was in session: grades 173; H.S. 184
4. Number of vacancies caused by death? 0 Resignation, etc? 1 Change of teachers for spring term? 0 Total 1
5. Number of eighth grade graduates or promotions. Boys 19 Girls 23 Total 42
6. Number of elementary tuition pupils attending this school. Boys 0 Girls 0 Total 0
7. Number of high school graduates. Boys 5 Girls 9 Total 14
8. Number of high school tuition pupils attending this school. Boys 12 Girls 18 Total 30
9. Superintendents who do no teaching (applies to grade schools only). Men 0 Women 0 Total 0
- 9a. Principals and Supervisors who teach less than half time (grade schools only). Men 0 Women 0 Total 0
10. Teachers and principals who teach half time or more (if more than one person has taught in a room only count the one teaching the longer part of the term). Men 3 Women 23 Total 26
11. Total number of teaching positions (sum of 9, 9a and 10) (show only the actual positions). Men 3 Women 23 Total 26
12. Qualifications of teachers: Number graduates of a College and State Normal School? 2 A College only? 2  
A Normal School only? 2 A four-year High School only? 16 If not a graduate, how many have attended a college?  
A State Normal School? 5 A High School? 1  
(Give only highest graduation or attendance of each teacher at work at end of term. The total will not be more than No. 11 above.)
13. Amount of annual salary earned by teachers: Men, \$ 3299.75; Women, \$ 1090.25; Total, \$ 4390.00  
(If a position has been held by more than one person, give as annual salary the sum earned by all for the teacher holding the position longest.)
14. Total days' attendance of all pupils enrolled. 167142
15. Number of teachers contributing to the Illinois State Teachers' Pension and Retirement Fund. 1 Total amount contributed \$ 5.00
16. Number of school houses: Public 5 Rented 0 Total 5
17. Number of sittings for study (capacity) (double seats to be counted as two sittings). 1260
- \*18. Value of school property:  
(a) Sites and buildings \$ 57208  
(b) Equipment (furniture, library, apparatus, etc.) 3500  
Total \$ 60708
19. Give length of service in this district of teachers holding positions at close of school: 1 yr.? 4 2 yrs.? 3  
3 yrs.? 3 4 yrs.? 5 5 yrs.? 3 6 yrs.? 3 7 yrs.? 3 8 yrs.? 1 9 yrs.? 1  
10 yrs.? 1 11 yrs.? 1 12 yrs.? 1 13 yrs.? 1 14 yrs.? 1 15 yrs.? 1 16 yrs.? 1  
17 yrs.? 1 18 yrs.? 1 19 yrs.? 1 20 yrs. or more? 1 (Count part of a year as a year.)
20. Promotion of health: Number of nurses employed? 0 Physicians? 0 Amount paid nurses? 0 Physicians? 0  
Number of pupils examined for physical defects or contagion? 0 Number found affected? 0 Number of homes visited by nurse or inspecting officer? 0  
Promotion of attendance: Number of truant officers employed? 0 Men? 0 Women? 0 Amount paid truant officers? 0  
Number of children not attending school between the ages of 7 and 14? 31 14 and 16? no data Number of children arrested and placed in charge of teacher? 0 Number sentenced by a court? 0 Number of school and age certificates issued? 3
- \*21. Amount of all taxes levied for school purposes, made August 1916. \$ 30000
- \*22. Amount of bonded indebtedness, July 1, 1917. \$ 22000
23. Number of volumes in library exclusive of supplementary reading books for class use. 542
24. Number of private schools in the district? 1 Number of teachers employed? 1 Men? 0 Women? 1 Number of pupils enrolled in elementary grades (1st to 8th): Boys? 5 Girls? 11 Secondary Grades (9th to 12th): Boys? 0 Girls? 0 College Grades (13th to 16th): Boys? 0 Girls? 0
- \*25. Number of persons between the ages of 12 and 21 who are unable to read and write: Boys 0 Girls 2 Total 2
26. Have you any departmental teaching below the high school? No If so, which years? 0
- \*27. Amount of endowment or permanent fund belonging to this district (not township fund). \$ 00  
(Do not answer items marked by a star unless the information given is confirmed by the clerk of the board.)

29. SALARIES OF TEACHERS.

Enter in the following table the number of teachers in day schools paid the different annual salaries.

		✓ ELEMENTARY		SECONDARY		ELEMENTARY		SECONDARY			
SALARIES		Men	Women	Men	Women	SALARIES		Men	Women	Men	Women
Less than \$200.....						\$1,200 to \$1,299.....					
\$200 to \$299.....						\$1,300 to \$1,399.....					
\$300 to \$399.....						\$1,400 to \$1,499.....					
\$400 to \$499.....			20			\$1,500 to \$1,599.....					
\$500 to \$599.....						\$1,600 to \$1,699.....					
\$600 to \$699.....						\$1,700 to \$1,799.....				1	
\$700 to \$799.....				1	3	\$1,800 to \$1,899.....					
\$800 to \$899.....		1				\$1,900 to \$1,999.....					
\$900 to \$999.....						\$2,000 to \$2,499.....					
\$1,000 to \$1,099.....						\$2,500 to \$2,999.....					
\$1,100 to \$1,199.....						\$3,000 and over.....					
Total (same as Item 11).....								1	20	2	3

NOTICE.

In districts having two or more buildings and a superintendent, only one copy is to be made by the principal of each building and filed with the superintendent, who is to consolidate the several reports and make two copies of the same and file with the county superintendent at the close of school.

Teachers are requested to fill out each item of this report. This is the initial report for data that is consolidated for the State and forwarded to the U. S. Commissioner of Education. Much depends upon the accuracy of your answers.

Teachers' Annual Report		FOR		School	
Virden		417		13	
Dist. No. 4		Macoupin		County	
Illinois, for school year ending June 30, 1917.		11		4	
Building is in Township 12		Range 6		10	
School closed June 7, 1917		62.108		11	
Made by Clyde Stone		Teacher or Principal		P. O.	
Virden, Ill.					
Filed 1917.					
Co. Supt.					
ILLINOIS PRINTING CO., DANVILLE, ILL.					

# GRADE TEACHERS' ANNUAL REPORT

YEAR OF 1917-18

Name of School Virden Dist. No. 4 Macoupin County, Illinois.

\*1. School census:

All Under 21 Years of Age.		
Boys	Girls	Total
1125	1130	2255

All Between 6 and 21 Years of Age.		
Boys	Girls	Total
765	786	1551

Date of Census:

June.....1918

Elementary. To be listed as they are at the close of the year before promotion.

Kindergarten		1st Yr.		2nd Yr.		3rd Yr.		4th Yr.		5th Yr.		6th Yr.		7th Yr.		8th Yr.		Total	
Boys	Girls	Boys	Girls	Boys	Girls	Boys	Girls	Boys	Girls	Boys	Girls	Boys	Girls	Boys	Girls	Boys	Girls	Boys	Girls
		92	95	87	61	71	84	72	75	62	47	64	54	34	46	39	46	521	503

Secondary (High)												Grand Total	
9th Yr.		10th Yr.		11th Yr.		12th Yr.		Total					
Boys	Girls	Boys	Girls	Boys	Girls	Boys	Girls	Boys	Girls	Boys	Girls	Boys	Girls
26	29	14	20	6	14	4	12	50	75	571	578		

- 2a. How many of the above were enrolled this year in some other district of this State before enrolling in this district..... Boys 20 Girls 25 Total 45
3. Length of school year in months: 8½ Actual number of days school was in session: 168
4. Vacancies of teachers caused by death? 0 by resignation 3 by change for spring term? 0 Total 3
5. Number of eighth grade graduates or promotions..... Boys 27 Girls 37 Total 64
6. Number of elementary tuition pupils attending this school..... Boys 0 Girls 0 Total 0
7. Number of high school graduates..... Boys 2 Girls 10 Total 12
8. Number of high school tuition pupils attending this school..... Boys 10 Girls 10 Total 20
9. Superintendents who do no teaching..... Men 0 Women 0 Total 0
- 9a. Principals and Supervisors who teach less than half time..... Men 1 Women 0 Total 1
10. Teachers and principals who teach half time or more (if more than one person has taught in a room only count the one teaching the longer part of the term)..... Men 1 Women 21 Total 22
11. Total number of teaching positions (sum of 9, 9a and 10) (show only the actual positions)..... Men 2 Women 21 Total 23
12. Qualifications of teachers: Number graduates of a College and State Normal School? 0 A College only? 1  
A Normal School only? 0 A four-year High School only? 16 If not a graduate, how many have attended a college? 4  
A State Normal School? 1 A High School? 1  
(Give only highest graduation or attendance of each teacher at work at end of term. The total will not be more than No. 11 above.)
13. Amount of annual salary earned by teachers: Men, \$ 1487.50; Women, \$ 9987.75; Total, \$ 11486.25  
(If a position has been held by more than one person, give as annual salary the sum earned by all for the teacher holding the position.)
14. Total days attendance of all pupils enrolled..... 166161
15. Number of teachers contributing to the Illinois State Teachers' Pension and Retirement Fund..... 3 Amount contributed this year, \$ 15.00
16. Number of school houses in the district: Public 5 Rented 0 Total 5
17. Number of sittings for study (capacity) (double seats to be counted as one sitting)..... 1124
- \*18. Value of school property:  
(a) Sites and buildings..... \$ 40000  
(b) Equipment (furniture, library, apparatus, etc.)..... \$ 25000  
Total..... \$ 65000
19. Give length of service in this district of teachers holding positions at close of school: 1 yr.? 3 2 yrs.? .....  
3 yrs.? 1 4 yrs.? 2 5 yrs.? 2 6 yrs.? 3 7 yrs.? 1 8 yrs.? 3 9 yrs.? 1  
10 yrs.? 1 11 yrs.? ..... 12 yrs.? 1 13 yrs.? 1 14 yrs.? 1 15 yrs.? ..... 16 yrs.? 1  
17 yrs.? 1 18 yrs.? ..... 19 yrs.? ..... 20 yrs. or more? 2 (Count part of a year as a year.)
20. Promotion of health: Number of nurses employed? 3 Physicians? 0 Amount paid nurses? \* Physicians? 0  
Number of pupils examined for physical defects or contagion 1149 Number found affected no data Number of homes visited by nurse or inspecting officer? no data  
Promotion of attendance: Number of truant officers employed? 0 Men? 0 Women? 0 Amount paid truant officers? 0  
Number of children not attending school between the ages of 7 and 14? no data 14 and 16? no data Number of children arrested and placed in charge of teacher? 0 Number sentenced by a court? 0 Number of school and age certificates issued? 2
- \*21. Amount of all taxes levied for school purposes, made August 1917..... \$ 30000
- \*22. Amount of bonded indebtedness, July 1, 1918..... \$ 19000
23. Number of volumes in library exclusive of supplementary reading books for class use..... 478
24. Number of private schools in the district? 1 Number of teachers employed? 1 Men? ..... Women? 1 Number of pupils enrolled in elementary grades (1st to 8th): Boys? 4 Girls? 6 Secondary Grades (9th to 12th): Boys? 0 Girls? 0 College Grades (13th to 16th): Boys? 0 Girls? 0
- \*25. Number of persons between the ages of 12 and 21 who are unable to read and write: Boys no data Girls no data Total no data
26. Have you any departmental teaching below the high school? no If so, which years? —
- \*27. Amount of endowment or permanent fund belonging to this district (not township fund)..... \$ —

\*NOTE.—Do not answer items marked by a star unless the information given is confirmed by the clerk of the board.

(OVER)

\* Paid by City Council.

28. SALARIES OF TEACHERS.

Enter in the following table the number of teachers in day schools paid the different annual salaries.

ELEMENTARY					SECONDARY				
SALARIES.	Men	Women	Men	Women	SALARIES.	Men	Women	Men	Women
Less than \$200.....					\$1,200 to \$1,299.....				
\$200 to \$299.....					\$1,300 to \$1,399.....				
\$300 to \$399.....					\$1,400 to \$1,499.....				
\$400 to \$499.....		18			\$1,500 to \$1,599.....				
\$500 to \$599.....		3			\$1,600 to \$1,699.....				
\$600 to \$699.....					\$1,700 to \$1,799.....	1 <sup>x</sup>		(1) <sup>x</sup>	
\$700 to \$799.....				3	\$1,800 to \$1,899.....				
\$800 to \$899.....	1			1	\$1,900 to \$1,999.....				
\$900 to \$999.....					\$2,000 to \$2,499.....				
\$1,000 to \$1,099.....					\$2,500 to \$2,999.....				
\$1,100 to \$1,199.....					\$3,000 and over.....				
Total (same as Item 11).....						2	21		4

NOTICE. *Supt. and Prin. same man; counted but once.*

This information is to be collected by the principal or the teacher in charge of a building from the teachers under his supervision and summarized in this report.

From the several buildings the reports are to be embodied in one report by the Superintendent who is to send two copies to the County Superintendent of Schools on or before July 15th.

Teachers are requested to fill out each item of this report. This is the initial report for data that is consolidated for the State and forwarded to the U. S. Commissioner of Education. Much depends upon the accuracy of your answers.

(4041-15M)

Grade  
Teachers' Annual Report

FOR  
*Virden* School

Dist. No. *4* Macoupin County,

Illinois, for school year ending June 30, 1918.

Building is in Township *12*, N., Range *6*, W.

School closed *June 2,* 1918.

Made by

*Clyde Shore* Teacher or Principal.

*Virden, Ill.* P. O.

Filed *2.18.11* 1918.

Co. Supt.

ILLINOIS PRINTING CO., DANVILLE, ILL.

# TEACHERS' ANNUAL REPORT

SCHOOL YEAR OF 1918-19

To the Teacher or Superintendent: The State and National authorities need and demand all the data called for in this report. You are rendering a valued service by a careful and prompt filling out of each item. For common schools of one teacher, items with starred numbers only are to be filled. In schools of two or more teachers the data should be collected by the Superintendent or Principal and embodied in one report. Two copies are to be filed with the County Superintendent within one week after the close of school.

\*1. Name of School..... Dist. No..... County, Illinois  
Elementary. To be listed as they are at the close of the year before promotion.

	Kindergarten		1st Yr.		2nd Yr.		3rd Yr.		4th Yr.		5th Yr.		6th Yr.		7th Yr.		8th Yr.		Total	
	Boys	Girls	Boys	Girls	Boys	Girls	Boys	Girls	Boys	Girls	Boys	Girls	Boys	Girls	Boys	Girls	Boys	Girls	Boys	Girls
Enrollment			112	113	66	77	81	75	72	82	69	61	52	68	44	38	24	39	520	553

\*2. Enrollment Secondary (High)

9th Yr.		10th Yr.		11th Yr.		12th Yr.		Total		Grand Total	
Boys	Girls	Boys	Girls	Boys	Girls	Boys	Girls	Boys	Girls	Boys	Girls
25	53	18	21	8	14	8	8	59	96	579	649

\*2a. How many of the above were enrolled this year in some other district of this State before enrolling in this district..... Boys 20 Girls 28 Total 48

\*3. Length of school year in months: Grades 8-12; H.S. 9 Actual number of days school was in session: Grades 150; H.S. 1

\*4. Vacancies of teachers caused by death..... 0 by resignation..... 2 by change for spring term..... 0 Total..... 2

\*5. Number of eighth grade graduates or promotions..... Boys 17 Girls 27 Total 44

\*6. Number of elementary tuition pupils attending this school..... Boys 1 Girls 2 Total 3

7. Number of high school graduates..... Boys 7 Girls 9 Total 16

8. Number of high school tuition pupils attending this school..... Boys 16 Girls 22 Total 38

9. Superintendents who do no teaching..... Men 0 Women 0 Total 0

9a. Principals and Supervisors who teach less than half time..... Men 1 Women 0 Total 1

\*10. Teachers and principals who teach half time or more (if more than one person has taught in a room count only the one teaching the longer part of the term)..... Men 1 Women 26 Total 27

\*11. Total number of teaching positions (sum of 9, 9a and 10) (show only the actual positions)..... Men 2 Women 26 Total 28

11a. Total number of high school teaching positions (show only the actual positions)..... Men 1 Women 5 Total 6

\*12. Qualifications of teachers: (Give only highest graduation or attendance of each teacher at work at end of term. The total will not be more than No. 11 above.) Number graduates of a College and State Normal School?..... A College only? 2  
A Normal School only?..... A four-year High School only? 18 If not a graduate, how many have attended a college?..... A State Normal School? 2 - A High School?.....

12a. Qualifications of high school teachers: (Give only highest graduation or attendance of each teacher at work at end of term. The total will not be more than No. 11a above.) Number graduates of a college and State Normal School?..... A College only? 1  
A Normal School only? 3 A four-year High School only? 2 If not a graduate, how many have attended a college?..... A State Normal School?..... A High School?.....

\*13. Amount of annual salary earned by teachers: Men, \$2700; Women, \$16965; Total, \$19665

13a. Amount of annual salary earned by high school teachers only: Men, \$900; Women, \$4500; Total, \$5400  
(If a position has been held by more than one person, give as annual salary the sum earned by all for the teacher holding the position).

\*14. Total days attendance of all pupils enrolled in both elementary and high school..... 158739

14a. Of all high school pupils (above 8th grade)..... 21148

\*15. Number of teachers contributing to the Illinois State Teachers' Pension and Retirement Fund: 8 Amount contributed this year, \$40

\*16. Number of school houses in the district: 5 Public..... Rented..... Total 5

16a. Number of school houses in the district used by high schools only..... 0 Public..... Rented..... Total 0

\*17. Number of sittings for study. (Double seats to be counted as one sitting)..... 1124

\*19. Give length of service in this district of teachers holding positions at close of school: 1 yr? 17 2 yrs?.....  
3 yrs? 2 4 yrs?..... 5 yrs? 1 6 yrs? 1 7 yrs? 2 8 yrs? 2 9 yrs?.....  
10 yrs?..... 11 yrs?..... 12 yrs?..... 13 yrs? 1 14 yrs?..... 15 yrs? 1 16 yrs?.....  
17 yrs?..... 18 yrs?..... 19 yrs?..... 20 yrs. or more? 1 (Count part of a year as a year. Total should equal that of No. 11.)

\*20. Promotion of health: Number of nurses employed? 1 Physicians? 0 Amount paid nurses? \$70 per mo. \$70  
Number of pupils examined for physical defects or contagion? 1228 Number found affected? None Number of homes visited by nurse or inspecting officer? all

Promotion of attendance: Number of truant officers employed? 0 Men? 0 Women?..... Amount paid truant officers?.....

Number of children not attending school between the ages of 7 and 14? None 14 and 16? None Number of children arrested and placed in charge of teacher? 0 Number sentenced by a court?..... Number of school and age certificates issued? 3

\*23. Number of volumes in library exclusive of supplementary reading books for class use..... 500

\*24. Number of private schools in the district? 1 Number of teachers employed?..... Men?..... Women?..... Number of pupils enrolled in elementary grades (1st to 8th): Boys?..... Girls?..... Secondary Grades (9th to 12th): Boys?..... Girls?..... College Grades (13 to 16th): Boys?..... Girls?.....

26. Have you any departmental teaching below the high school? No If so, which years?.....

26a. Number of years of high school work offered in the following courses: Academic (classical, scientific, etc.) 4 Commercial 1

Technical (M. T.)..... Agricultural 1 Domestic Science..... Normal..... Vocational (under State Board).....

28. SALARIES OF TEACHERS.

Enter in the following table the number of teachers in day schools paid the different annual salaries.

ELEMENTARY					SECONDARY				
ELEMENTARY					SECONDARY				
SALARIES.	Men	Women	Men	Women	SALARIES.	Men	Women	Men	Women
Less than \$200					\$1,200 to \$1,299				
\$200 to \$299					\$1,300 to \$1,399				
\$300 to \$399					\$1,400 to \$1,499				
\$400 to \$499					\$1,500 to \$1,599				
\$500 to \$599					\$1,600 to \$1,699				
\$600 to \$699		21			\$1,700 to \$1,799				
\$700 to \$799					\$1,800 to \$1,899				1*
\$800 to \$899					\$1,900 to \$1,999				
\$900 to \$999	1			5	\$2,000 to \$2,499				
\$1,000 to \$1,099					\$2,500 to \$2,999				
\$1,100 to \$1,199					\$3,000 and over				
Total (same as Item 11):						1	21	1	5

\* Supt.

(15595-35m)

Teachers' Annual Report

FOR

Public School  
Dist. No. 4, Macoupin County,  
Illinois, for school year ending June 30, 1919.

Building is in Township Range

School closed June 2, 1919

Made by  
Olyae Stanc Supr.  
Teacher or Principal  
Virden, Ill. P. O.

Filed June 3, 1919

George W. Solomon  
Co. Supt.

# TEACHERS' ANNUAL REPORT

SCHOOL YEAR OF 1919-1920

To the Teacher or Superintendent: The State and National authorities need and demand all the data called for in this report. You are rendering a valued service by a careful and prompt filling out of each item. For common schools of one teacher, items with starred numbers only are to be filled. In schools of two or more teachers the data should be collected by the Superintendent or Principal and embodied in one report. Two copies are to be filed with the County Superintendent within one week after the close of school.

\*1. Name of School Public Dist. No. 4, Macoupin County, Illinois  
Elementary. To be listed as they are at the close of the year before promotion.

Enrollment	Kindergarten		1st Yr.		2nd Yr.		3rd Yr.		4th Yr.		5th Yr.		6th Yr.		7th Yr.		8th Yr.		Total	
	Boys	Girls	Boys	Girls	Boys	Girls	Boys	Girls	Boys	Girls	Boys	Girls	Boys	Girls	Boys	Girls	Boys	Girls	Boys	Girls
			125	106	69	72	59	71	71	63	71	72	58	72	63	51	29	44	545	551

\*2. Secondary (High)

Enrollment	9th Yr.		10th Yr.		11th Yr.		12th Yr.		Total		Grand Total	
	Boys	Girls	Boys	Girls	Boys	Girls	Boys	Girls	Boys	Girls	Boys	Girls
	23	29	20	35	15	13	9	9	67	86	612	637

\*2a. How many of the above were enrolled this year in some other district of this State before enrolling in this district..... Boys 14 Girls 21 Total 35

\*3. Length of school year in months: 9  
Actual number of days school was in session 180

\*4. Vacancies of teachers caused by death 0 by resignation 2 by change for spring term 0 Total 2

\*5. Number of eighth grade graduates or promotions..... Boys 23 Girls 34 Total 57

\*6. Number of elementary tuition pupils attending this school..... Boys 0 Girls 0 Total 0

\*7. Number of high school graduates..... Boys 5 Girls 9 Total 14

\*8. Number of high school tuition pupils attending this school..... Boys 17 Girls 16 Total 33

\*9. Superintendents who do no teaching..... Men 0 Women 0 Total 0

\*9a. Principals and Supervisors who teach less than half time..... Men 1 Women 0 Total 1

\*10. Teachers and principals who teach half time or more (if more than one person has taught in a room count only the one teaching the longer part of the term)..... Men 3 Women 24 Total 27

\*11. Total number of all teaching positions (sum of 9, 9a and 10) (show only the actual positions)..... Men 4 Women 24 Total 28

\*11a. Total number of high school teaching positions (show only the actual positions)..... Men 2 Women 4 Total 6

\*12. Qualifications of all teachers: (Give only highest graduation or attendance of each teacher at work at end of term. The total will not be more than No. 11 above.) Number graduates of a College and State Normal School?..... A College Only? 2

A Normal School only? 4 A four-year High School only?..... If not a graduate, how many have attended a college? 3 A State Normal School? 19 A High School?.....

\*12a. Qualifications of high school teachers: (Give only highest graduation or attendance of each teacher at work at end of term. The total will not be more than No. 11a above.) Number graduates of a college and State Normal School?..... A College only? 2

A Normal School only? 4 A four-year High School only?..... If not a graduate, how many have attended a college?..... A State Normal School?..... A High School?.....

\*13. Amount of annual salary earned by all teachers: Men, \$ 4400; Women, \$ 16875; Total, \$ 21275

\*13a. Amount of annual salary earned by high school teachers only: Men, \$ 1350; Women, \$ 3600; Total, \$ 4950  
(If a position has been held by more than one person, give as annual salary the sum earned by all for the teacher holding the position at end of term.)

\*14. Total days attendance of all pupils enrolled in both elementary and high school 176,488

\*14a. Of all high school pupils (above 8th grade) 23,773

\*15. Number of teachers contributing to the Illinois State Teachers' Pension and Retirement Fund: 5 Amount contributed this year, \$ 35.00

\*16. Number of all public school houses in the district: Public 5 Rented..... Total 5

\*16a. Number of school houses in the district used by high schools only Public 0 Rented..... Total 0

\*17. Number of sittings for study: (Double seats to be counted as one sitting) 1281

\*19. Give length of service in this district of teachers holding positions at close of school: 1 yr? 12 2 yrs? 3  
3 yrs? 2 4 yrs? 1 5 yrs?..... 6 yrs? 1 7 yrs? 1 8 yrs? 2 9 yrs?.....  
10 yrs? 2 11 yrs? 1 12 yrs?..... 13 yrs? 1 14 yrs?..... 15 yrs?..... 16 yrs?.....  
17 yrs?..... 18 yrs?..... 19 yrs?..... 20 yrs. or more 2 (Count part of a year as a year. Total should equal that of No. 11)

\*20. Promotion of health: Number of nurses employed? 1 Physicians? 0 Amount paid nurses? 630 Physicians?.....  
Number of pupils examined for physical defects or contagion..... Number found affected..... Number of homes visited by nurse or inspecting officer?.....

Promotion of attendance: Number of truant officers employed? 0 Men?..... Women?..... Amount paid truant officers?.....  
Number of children not attending school between the ages of 7 and 14?..... 14 and 16?..... Number of children arrested and placed in charge of teacher?..... Number sentenced by a court?..... Number of school and age certificates issued?.....

\*23. Number of volumes in library exclusive of supplementary reading books for class use 707

\*24. Number of private schools in the district? 0 Number of teachers employed?..... Men?..... Women?..... Number of pupils enrolled in elementary grades (1st to 8th): Boys?..... Girls?..... Secondary Grades (9th to 12th): Boys?..... Girls?..... College Grades (13th to 16th): Boys?..... Girls?.....

\*26. Have you any departmental teaching below the high schools? No If so, which years?.....

\*26a. Number of years of high school work offered in the following courses Academic (classical, scientific, etc.) 4 Commercial.....  
Technical (M. T.)..... Agricultural..... Domestic Science..... Normal..... Vocational (under State Board).....  
(over)

28. SALARIES OF TEACHERS.

Enter in the following table the number of teachers in day schools paid the different annual salaries.

ELEMENTARY					SECONDARY				
ELEMENTARY					SECONDARY				
SALARIES	Men	Women	Men	Women	SALARIES	Men	Women	Men	Women
Less than \$200					\$1,200 to \$1,299				
\$200 to \$299					\$1,300 to \$1,399				
\$300 to \$399					\$1,400 to \$1,499				
\$400 to \$499					\$1,500 to \$1,599				
\$500 to \$599					\$1,600 to \$1,699				
\$600 to \$699		19			\$1,700 to \$1,799				
\$700 to \$799					\$1,800 to \$1,899	1	Superintendent		
\$800 to \$899	2				\$1,900 to \$1,999				
\$900 to \$999			1	4	\$2,000 to \$2,499				
\$1,000 to \$1,099					\$2,500 to \$2,999				
\$1,100 to \$1,199					\$3,000 and over				
Total (same as Item 11)						3	20	1	4

(29480—35M)

Teachers' Annual Report

FOR

Virden Public School

Dist. No. 4, Macoupin County, Illinois, for school year ending June 30, 1920.

Building is in Township 12 Range 6

School closed May 31, 1920

Made by Clyde Stone, Supt. Teacher & Principal. Virden, Ill. P. O.

Filed June 12, 1920 Geo. W. Lammiman, Co. Supt.



# TEACHERS' ANNUAL REPORT

SCHOOL YEAR OF 1920-1921

To the Teacher or Superintendent: The State and National authorities need and demand all the data called for in this report. You are rendering a valued service by a careful and prompt filling out of each item. For common schools of one teacher, items with **starred numbers** only are to be filled. In schools of two or more teachers the data should be collected by the Superintendent or Principal and embodied in one report. **Two** copies are to be filed with the **County Superintendent** within **one week** after the close of school.

\*1. Name of School Vinden Graded School Dist. 4 Macoupin County, Illinois

Elementary. To be listed as they are at the close of the year before promotion.

Kindergarten.	1st Yr.		2nd Yr.		3rd Yr.		4th Yr.		5th Yr.		6th Yr.		7th Yr.		8th Yr.		Total	
	Boys	Girls	Boys	Girls	Boys	Girls	Boys	Girls	Boys	Girls	Boys	Girls	Boys	Girls	Boys	Girls	Boys	Girls
			11	7	8	7	6	6	4	6	7	5	6	6	3	5	5	5

Secondary (High)										Grand Total	
9th Yr.		10th Yr.		11th Yr.		12th Yr.		Total			
Boys	Girls	Boys	Girls	Boys	Girls	Boys	Girls	Boys	Girls	Boys	Girls
										5	5

\*2a. How many of the above were enrolled this year in some other district of this State before enrolling in this district..... Boys 29 Girls 46 Total 75

\*3e. Length of school year in months..... 8 1/2

\*3f. Actual number of days school was in session..... 173

\*4. Total days attendance of all pupils enrolled in both elementary and high school..... 172, 485

4a. Of all high school pupils (above 8th grade).....

\*5. Number of eighth grade graduates or promotions..... Boys 34 Girls 35 Total 69

\*6. Number of elementary tuition pupils attending this school..... Boys..... Girls..... Total.....

7. Number of high school graduates..... Boys..... Girls..... Total.....

8. Number of high school tuition pupils attending this school..... Boys..... Girls..... Total.....

9. Superintendents who do no teaching..... Men..... Women..... Total.....

9a. Principals and Supervisors who teach less than half time..... Men..... Women..... Total.....

\*10. Teachers and principals who teach half time or more (if more than one person has taught in a room count only the one teaching the longer part of the term)..... Men..... Women..... Total.....

\*11. Total number of all teaching positions (sums of 9, 9a, and 10) (show only the actual positions) Men..... Women..... Total.....

11a. Total number of high school teaching positions (show only the actual positions) Men..... Women..... Total.....

\*12. Qualifications of all teachers: (Give only highest graduation or attendance of each teacher at work at end of term. The total will not be more than No. 11 above.) Number graduates of a College and State Normal School..... A College Only.....  
A Normal School only..... A Four-year High School only.....  
If not a graduate, how many have attended a College.....? A State Normal School.....? A High School.....?

12a. Qualifications of high school teachers: (Give only highest graduation or attendance of each teacher at work at end of term. The total will not be more than No. 11a above.) Number graduates of a College and State Normal School..... A College only.....  
A Normal School only..... A four-year High School only..... If not a graduate, how many have attended a College.....? A State Normal School.....? A High School.....?

\*13. Vacancies of teachers caused by death..... by resignation..... by change for spring term..... Total.....

\*15. Amount of annual salary earned by all teachers: Men, \$.....; Women \$..... Total, \$.....

15a. Amount of annual salary earned by high school teachers only: Men, \$.....; Women \$..... Total, \$.....  
(If a position has been held by more than one person, give as annual salary the sum earned by all for the teacher holding the position at end of term.)

\*16. Number of teachers contributing to the Illinois State Teachers' Pension and Retirement Fund.....; Amount contributed this year, \$.....

\*17. Number of all public school houses in the district: Public..... Rented..... Total.....

17a. Number of school houses in the district used by high schools only..... Public..... Rented..... Total.....

\*18. Number of sittings for study: (Double seats to be counted as one sitting).....

\*20. Give length of service in this district of teachers holding positions at close of school: 1 yr..... 2 yrs.....  
3 yrs..... 4 yrs..... 5 yrs..... 6 yrs..... 7 yrs..... 8 yrs..... 9 yrs.....  
10 yrs..... 11 yrs..... 12 yrs..... 13 yrs..... 14 yrs..... 15 yrs..... 16 yrs.....  
17 yrs..... 18 yrs..... 19 yrs..... 20 yrs. or more..... (Count part of a year as a year. Total should equal that of No. 11.)

\*24. Number of volumes in library exclusive of supplementary reading books for class use.....

\*26. Number of private schools in the district..... Number of teachers employed..... Men..... Women..... Number of pupils enrolled in elementary grades (1st to 8th): Boys..... Girls..... Secondary Grades (9th to 12th): Boys..... Girls..... College Grades (13th to 16th): Boys..... Girls.....

\*27. Promotion of health: Number of nurses employed..... Physicians..... Amount paid nurses..... Physicians.....  
Number of pupils examined for physical defects or contagion..... Number found affected..... Number of homes visited by nurse or inspecting officer.....

Promotion of attendance: Number of truant officers employed..... Men..... Women..... Amount paid truant officers.....  
Number of children not attending school between the ages of 7 and 14..... 14 and 16..... Number of children arrested and placed in charge of teacher..... Number sentenced by a court..... Number of school and age certificates issued.....

29. Number of years of high school work offered in the following courses: Academic (classical, scientific, etc.)..... Commercial.....  
Technical (M. T.)..... Agricultural..... Domestic Science..... Normal..... Vocational (under State Board).....

(OVER)

14. SALARIES OF TEACHERS.

Enter in the following table the number of teachers in day schools paid the different annual salaries.

ELEMENTARY					SECONDARY				
ELEMENTARY					SECONDARY				
SALARIES	Men	Women	Men	Women	SALARIES	Men	Women	Men	Women
Less than \$200.....					\$1,200 to \$1,299.....				
\$200 to \$299.....					\$1,300 to \$1,399.....				
\$300 to \$399.....					\$1,400 to \$1,499.....				
\$400 to \$499.....					\$1,500 to \$1,599.....				
\$500 to \$599.....					\$1,600 to \$1,699.....	1			
\$600 to \$699.....					\$1,700 to \$1,799.....				
\$700 to \$799.....					\$1,800 to \$1,899.....				
\$800 to \$899.....		24			\$1,900 to \$1,999.....				
\$900 to \$999.....					\$2,000 to \$2,499.....				
\$1,000 to \$1,099.....	1				\$2,500 to \$2,999.....				
\$1,100 to \$1,199.....					\$3,000 and over.....				
Total (same as Item 11).....						2	24		

11

Teachers' Annual Report

FOR

Virden Graded Schools

Dist. No. 4 Macoupin County, Illinois, for school year ending June 30, 1921.

Building is in Township 12 Range 6

School closed May 20 1921

Made by John Little Teacher or Principal

Virden, Ill P. O.

Filed May 24 1921

Shelton Co. Supt.



## TEACHERS' ANNUAL REPORT

SCHOOL YEAR OF 1921-1922

To the Teacher or Superintendent: The State and National authorities need and demand all the data called for in this report. You are rendering a valued service by a careful and prompt filling out of each item. For common schools of one teacher, items with starred numbers only are to be filled. In schools of two or more teachers the data should be collected by the Superintendent or Principal and embodied in one report. Two copies are to be filed with the County Superintendent within one week after the close of school.

- \* 1. Name of School Urbana Dist. 4 No. Macoupin County, Illinois  
Elementary. To be listed as they are at the close of the year before promotion.

Enrollment	Kindergarten.		1st Yr.		2nd Yr.		3rd Yr.		4th Yr.		5th Yr.		6th Yr.		7th Yr.		8th Yr.		Total	
	Boys	Girls	Boys	Girls	Boys	Girls	Boys	Girls	Boys	Girls	Boys	Girls	Boys	Girls	Boys	Girls	Boys	Girls	Boys	Girls
			76	84	75	85	71	76	50	80	50	70	75	60	40	60	45	50	1047	

\* 2. Enrollment

9th Yr.		10th Yr.		11th Yr.		12th Yr.		Total		Grand Total	
Boys	Girls	Boys	Girls	Boys	Girls	Boys	Girls	Boys	Girls	Boys	Girls

- \* 2a. How many of the above were enrolled this year in some other district of this state before enrolling in this district..... Boys..... Girls..... Total.....
- \* 3a. Length of school year in months..... 8 1/2
- \* 3f. Actual number of days school was in session..... 173
- \* 4. Total days attendance of all pupils enrolled in both elementary and high school..... 163169
- \* 4a. Average daily attendance of all pupils enrolled in both elementary and high school (See note below)..... 948.5
- \* 4b. Total days attendance of all high school pupils (above 8th grade)..... 1
- \* 4c. Average daily attendance of all high school pupils (above 8th grade) (See note below)..... 1
- (Note—The average daily attendance in a one-room school is found by dividing the total days attendance by the number of days the school was actually in session. In schools of two or more rooms, or in schools whose records of attendance are kept by session teachers, the average daily attendance is the sum of the averages of the units composing the group. For example: The principal of a two-room school should enter in item 4a the sum of the averages of the two rooms. The principal of a school containing several rooms whose work includes the eight grades and a high school should enter in item 4a the sum of the averages of the grade rooms and of the high school. The superintendent of a city system of schools should enter in item 4a the sum of the averages of the various ward schools and of the high school. The principal of each ward school and the principal of each high school should report the average for his school found by adding the averages of the various rooms or session groups composing the school.)
- \* 5. Number of eighth grade graduates or promotions..... Boys 33 Girls 42 Total 75
- \* 6. Number of elementary tuition pupils attending this school..... Boys..... Girls..... Total.....
- \* 7. Number of high school graduates..... Boys..... Girls..... Total.....
- \* 8. Number of high school tuition pupils attending this school..... Boys..... Girls..... Total.....
- \* 9. Superintendents who do no teaching..... Men 1 Women..... Total 1
- \* 9a. Principals and Supervisors who teach less than half time..... Men 1 Women 1 Total 2
- \* 10. Teachers and principals who teach half time or more (if more than one person has taught in a room count only the one teaching the longer part of the term)..... Men..... Women..... Total.....
- \* 11. Total number of all teaching positions (sum of 9, 9a, and 10) (show only the actual positions)..... Men 1 Women 26 Total 27
- \* 11a. Total number of high school teaching positions (show only the actual positions)..... Men..... Women..... Total.....
- \* 12. Qualifications of all teachers: (Give only highest graduation or attendance of each teacher at work at end of term. The total will not be more than No. 11 above.) Number graduates of a College and State Normal School..... 1 A College Only..... 1  
A Normal School only..... 1 A Four-year High School only..... 25 If not a graduate, how many have attended a College.....? A State Normal School.....? A High School.....?
- \* 12a. Qualifications of high school teachers: (Give only highest graduation or attendance of each teacher at work at end of term. The total will not be more than No. 11a above.) Number graduates of a College and State Normal School..... A College only.....  
A Normal School only..... A Four-year High School only..... If not a graduate, how many have attended a College.....? A State Normal School..... 25 A High School.....?
- \* 13. Vacancies of teachers caused by death..... by resignation..... by change for spring term..... Total.....
- \* 15. Amount of annual salary earned by all teachers: Men, \$ 1800; Women, \$ 20022.50 Total, \$ 21822.50
- \* 15a. Amount of annual salary earned by high school teachers only: Men, \$.....; Women, \$..... Total, \$.....  
(If a position has been held by more than one person, give as annual salary the sum earned by all for the teacher holding the position at end of term.)
- \* 16. Number of teachers contributing to the Illinois State Teachers' Pension and Retirement Fund..... 21; Amount contributed this year, \$.....
- \* 17. Number of all public school houses in the district..... 5 Public..... Rented..... Total..... 5
- \* 17a. Number of school houses in the district used by high schools only..... Public..... Rented..... Total.....
- \* 18. Number of sittings for study: (Double seats to be counted as one sitting)..... 1007 9 7
- \* 20. Give length of service in this district of teachers holding positions at close of school: 1 yr..... 2 yrs..... 3 yrs..... 3 4 yrs..... 5 yrs..... 6 yrs..... 7 yrs..... 8 yrs..... 9 yrs..... 10 yrs..... 11 yrs..... 12 yrs..... 13 yrs..... 14 yrs..... 15 yrs..... 16 yrs..... 17 yrs..... 18 yrs..... 19 yrs..... 20 yrs or more..... (Count part of a year as a year. Total should equal that of No. 11.)
- \* 24. Number of volumes in library exclusive of supplementary reading books for class use..... 1000
- \* 26. Number of private schools in the district..... Number of teachers employed..... Men..... Women..... Number of pupils enrolled in elementary grades (1st to 8th): Boys..... Girls..... Secondary Grades (9th to 12th): Boys..... Girls..... College Grades (13th to 16th): Boys..... Girls.....
- \* 27. Promotion of health: Number of nurses employed..... 1 Physicians..... 1 Amount paid nurses \$ 500 Physicians \$.....  
Number of pupils examined for physical defects or contagion..... 1047 Number found affected..... 150 Number of homes visited by nurse or inspecting officer..... 50
- Promotion of attendance: Number of truant officers employed..... none Men..... Women..... Amount paid truant officers \$.....  
Number of children not attending school between the ages of 7 and 14..... 15 14 and 16..... 50 Number of children arrested and placed in charge of teacher..... Number sentenced by a court..... Number of school and age certificates issued.....
- \* 29. Number of years of high school work offered in the following courses: Academic (classical, scientific, etc.)..... Commercial..... Technical (M. T.)..... Agricultural..... Domestic Science..... Normal..... Vocational (under State Board).....

(IMPORTANT—Two items to be filled are on back of this sheet.)  
(OVER)

14. SALARIES OF TEACHERS.

Enter in the following table the number of teachers in day schools paid the different annual salaries.

Elementary					Secondary				
Elementary					Secondary				
Salaries	Men	Women	Men	Women	Salaries	Men	Women	Men	Women
Less than \$200					\$1,200 to \$1,299				
\$200 to \$299					\$1,300 to \$1,399				
\$300 to \$399					\$1,400 to \$1,499				
\$400 to \$499					\$1,500 to \$1,599				
\$500 to \$599					\$1,600 to \$1,699				
\$600 to \$699					\$1,700 to \$1,799				
\$700 to \$799	2				\$1,800 to \$1,899	1			
\$800 to \$899	24				\$1,900 to \$1,999				
\$900 to \$999					\$2,000 to \$2,499				
\$1,000 to \$1,099					\$2,500 to \$2,999				
\$1,100 to \$1,199					\$3,000 and over				
					Total (same as Item 11)				

58. SPECIAL REPORT IF A CONSOLIDATED SCHOOL.

(a) Dist. No.....; (b) Number of Districts consolidated.....; (c) Are the grade school pupils all assembled in one building?..... If not, in how many buildings?..... (d) Area in square miles.....; (e) Number of teachers: Elementary....., High School.....; (f) Number of students: Elementary....., High School.....; (g) Check Vocational Subjects taught: Agriculture....., Manual Training....., Sewing....., Cooking.....; (h) Transportation furnished by district. Yes....., No.....; Number of vehicles.....; Annual cost of transportation \$.....

Teachers' Annual Report

FOR

Virden City School

Dist. No. 4 Macoupin County, Illinois, for school year ending June 30, 1922.

Building is in Township 12 Range 6

School closed May 18 1922 Made by

G. C. Mayhew Teacher or Principal Virden Ill P. O.

Filed June 29 1922 G. W. Solomon Co. Supt.

TEACHERS' ANNUAL REPORT

SCHOOL YEAR 1922-1923

To the Teacher or Superintendent: The State and National authorities need and demand all the data called for in this report. You are rendering a valuable service by a careful and prompt filling out of each item. For common schools of one teacher, items with starred numbers only are to be filled. In schools of two or more teachers the data should be collected by the Superintendent or Principal and embodied in one report. Two copies are to be filed with the County Superintendent within one week after the close of school.

\* 1. Name of School Union Dist. H. Macoupin County, Illinois.  
Enrollment Note: All whose names have been enrolled during the year should be reported and classified as they are at the close of the year before promotion, or at the time they may have left the district.

Elementary

	Kindergarten		1st Yr.		2nd Yr.		3rd Yr.		4th Yr.		5th Yr.		6th Yr.		7th Yr.		8th Yr.		Total	
	Boys	Girls	Boys	Girls	Boys	Girls	Boys	Girls	Boys	Girls	Boys	Girls	Boys	Girls	Boys	Girls	Boys	Girls	Boys	Girls
Enrollment			19	73	63	62	87	81	78	80	49	69	71	62	63	64	44	53	554	541

\* 2. Secondary (High)—(See note after "Enrollment" above).

	9th Yr.		10th Yr.		11th Yr.		12th Yr.		Total		Grand Total (Elem. and High)	
	Boys	Girls	Boys	Girls	Boys	Girls	Boys	Girls	Boys	Girls	Boys	Girls

\* 2a. How many of the above were enrolled this year in some other district of this state before enrolling in this district..... Boys..... Girls..... Total.....

\* 3e. Length of school year in months..... 8 1/2.....

\* 3f. Actual number of days school was in session..... 177.....

\* 4. Total days attendance of all pupils enrolled in both elementary and high school..... 168 546.....

\* 4a. Average daily attendance of all pupils enrolled in both elementary and high school (See note below 4c).....

4b. Total days attendance of all high school pupils (above 8th grade)..... 880.47.....

4c. Average daily attendance of all high school pupils (above 8th grade) (See note below)  
(Note—The average daily attendance in a one-room school is found by dividing the total days attendance by the number of days the school was actually in session. In schools of two or more rooms, or in schools whose records of attendance are kept by session teachers, the average daily attendance is the sum of the averages of the units composing the group. For example: The principal of a two-room school should enter in item 4a the sum of the averages of the two rooms. The principal of a school containing several rooms whose work includes the eight grades and a high school should enter in item 4a the sum of the averages of the grade rooms and of the high school. The superintendent of a city system of schools should enter in item 4a the sum of the averages of the various ward schools and of the high school. The principal of each ward school and the principal of each high school should report the average for his school found by adding the averages of the various rooms or session groups composing the school.)

\* 5. Number of eighth grade graduates or promotions..... 86 Boys..... 88 Girls..... 44 Total.....

\* 6. Number of elementary tuition pupils attending this school..... Boys..... Girls..... Total.....

7. Number of high school graduates..... Boys..... Girls..... Total.....

8. Number of high school tuition pupils attending this school..... Boys..... Girls..... Total.....

9. Superintendents who do no teaching..... Men..... Women..... Total.....

9a. Principals and Supervisors who teach less than half time..... Men..... Women..... Total.....

\* 10. Teachers and principals who teach half time or more (if more than one person has taught in a room count only the one teaching at the end of the term)..... Men..... Women..... Total.....

\* 11. Total number of all teaching positions (sum of 9, 9a, and 10) (show only the actual positions)..... Men..... Women..... Total.....

11a. Total number of high school teaching positions (show only the actual positions)..... Men..... Women..... Total.....

\* 12. Qualifications of all teachers: (Give only highest graduation or attendance of each teacher at work at end of term. The total will not be more than No. 11 above.) Number graduates of a College and State Normal School..... A College only.....

A Normal School only..... A Four-year High School only..... If not a graduate, how many have attended

a College.....? A State Normal School.....? A High School.....?

12a. Qualifications of high school teachers: (Give only highest graduation or attendance of each teacher at work at end of term. The total will not be more than 11a above.) Number graduates of a College and State Normal School..... A College only.....

A Normal School only..... A Four-year High School only..... If not a graduate, how many have attended

a College.....? A State Normal School.....? A High School.....?

\* 13. Vacancies of teachers caused by death.....by resignation.....by change for spring term.....Total.....

\* 15. Amount of annual salary earned by all teachers: Men, \$.....; Women, \$.....; Total, \$.....

(If a position has been held by more than one person, give as annual salary the sum earned by all for the teacher holding the position at end of term.)

15a. Amount of annual salary earned by high school teachers only: Men, \$.....; Women, \$.....; Total, \$.....

\* 16. Number of teachers contributing to the Illinois State Teachers' Pension and Retirement Fund.....; Amount contributed this year, \$.....

\* 17. Number of all public school houses in the district..... Public..... Rented..... Total.....

17a. Number of school houses in the district used by high schools only..... Public..... Rented..... Total.....

\* 18. Number of sittings for study: (A double seat to be counted as one sitting).....

\* 20. Give length of service in this district of teachers holding positions at close of school: 1 yr..... 2 yrs..... 3 yrs..... 4 yrs..... 5 yrs..... 6 yrs..... 7 yrs..... 8 yrs..... 9 yrs..... 10 yrs..... 11 yrs..... 12 yrs..... 13 yrs..... 14 yrs..... 15 yrs..... 16 yrs..... 17 yrs..... 18 yrs..... 19 yrs..... 20 yrs or more..... (Count part of a year as a year. Total should equal that of No. 11.)

\* 24. Number of volumes in library exclusive of supplementary reading books for class use.....

\* 26. Number of private schools in the district.....Number of teachers employed.....Men.....Women.....Number of pupils enrolled in elementary grades (1st to 8th): Boys.....Girls.....Secondary Grades (9th to 12th): Boys.....Girls.....College Grades (13th to 16th): Boys.....Girls.....

\* 27. Promotion of health: Number of nurses employed.....Physicians.....Amount paid nurses \$.....Physicians \$.....Number of pupils examined for physical defects or contagion.....Number found affected.....Number of homes visited by nurse or inspecting officer.....

Promotion of attendance: Number of truant officers employed.....Men.....Women.....Amount paid truant officers \$.....

Number of children not attending school between the ages of 7 and 14.....14 and 16.....Number of children arrested and placed in charge of teacher.....Number sentenced by a court.....Number of school and age certificates issued.....

29. Number of years of high school work offered in the following courses: Academic (classical, scientific, etc.).....Commercial.....Technical (M. T.).....Agricultural.....Domestic Science.....Normal.....Vocational (under State Board).....

14. SALARIES OF TEACHERS.

Enter in the following table the number of teachers in day schools paid the different annual salaries.

Elementary					Secondary				
Elementary					Secondary				
Salaries	Men	Women	Men	Women	Salaries	Men	Women	Men	Women
Less than \$200.....					\$1,200 to \$1,299.....				
\$200 to \$299.....					\$1,300 to \$1,399.....				
\$300 to \$399.....					\$1,400 to \$1,499.....				
\$400 to \$499.....					\$1,500 to \$1,599.....				
\$500 to \$599.....					\$1,600 to \$1,699.....				
\$600 to \$699.....					\$1,700 to \$1,799.....				
\$700 to \$799.....	1				\$1,800 to \$1,899.....				
\$800 to \$899.....	26				\$1,900 to \$1,999.....				
\$900 to \$999.....					\$2,000 to \$2,499.....	1			
\$1,000 to \$1,099.....					\$2,500 to \$2,999.....				
\$1,100 to \$1,199.....					\$3,000 and over.....				
Total (same as Item 11).....									

58. SPECIAL REPORT IF A CONSOLIDATED SCHOOL.

(a) Dist. No.....; (b) Number of Districts consolidated.....; (c) Are the grade school pupils all assembled in one building?..... If not, in how many buildings?..... (d) Area in square miles.....; (e) Number of teachers: Elementary.....; High School.....; (f) Number of students: Elementary.....; High School.....; (g) Check Vocational Subjects taught; Agriculture.....; Manual Training....., Sewing....., Cooking.....; (h) Transportation furnished by district. Yes....., No.....; Number of vehicles.....; Annual cost of transportation \$..... (Note: If vehicle is owned by the district, one-fifth of its cost should be counted as a part of the annual cost of transportation.)

Teacher's Annual Report

FOR

Viradena Republic School

Dist. No. 4 Macoupin County, Illinois, for school year ending June 30, 1923.

Building is in Township Range

School closed 1923

Made by Mrs. Mary Ann Teacher or Principal

Greenlee P. O.

Filed 1923

Co. Supt.

TEACHERS' ANNUAL REPORT

SCHOOL YEAR 1922-1923

To the Teacher or Superintendent: The State and National authorities need and demand all the data called for in this report. You are rendering a valuable service by a careful and prompt filling out of each item. For common schools of one teacher, items with starred numbers only are to be filled. In schools of two or more teachers the data should be collected by the Superintendent or Principal and embodied in one report. Two copies are to be filed with the County Superintendent within one week after the close of school.

1. Name of School: Union Dist. 4 No. Marquette County, Illinois.  
Enrollment Note: All whose names have been enrolled during the year should be reported and classified as they are at the close of the year before promotion, or at the time they may have left the district.  
Elementary

Enrollment	Kindergarten		1st Yr.		2nd Yr.		3rd Yr.		4th Yr.		5th Yr.		6th Yr.		7th Yr.		8th Yr.		Total		
	Boys	Girls	Boys	Girls	Boys	Girls	Boys	Girls	Boys	Girls	Boys	Girls	Boys	Girls	Boys	Girls	Boys	Girls	Boys	Girls	
			59	62	70	53	63	67	62	59	83	92	41	56	46	53	42	51	499	576	
2.	Secondary (High)—(See note after "Enrollment" above).																				
1.	9th Yr.		10th Yr.		11th Yr.		12th Yr.		Total		Grand Total (Elem. and High)										
	Boys	Girls	Boys	Girls	Boys	Girls	Boys	Girls	Boys	Girls	Boys		Girls								
101																					

- 2a. How many of the above were enrolled this year in some other district of this state before enrolling in this district..... Boys..... Girls..... Total.....
- 3e. Length of school year in months..... 8 1/2.....
- 3f. Actual number of days school was in session..... 171.....
4. Total days attendance of all pupils enrolled in both elementary and high school..... 147 955.....
- 4a. Average daily attendance of all pupils enrolled in both elementary and high school (See note below 4c)..... 865 7.....
- 4b. Total days attendance of all high school pupils (above 8th grade).....
- 4c. Average daily attendance of all high school pupils (above 8th grade) (See note below)  
(Note—The average daily attendance in a one-room school is found by dividing the total days attendance by the number of days the school was actually in session. In schools of two or more rooms, or in schools whose records of attendance are kept by session teachers, the average daily attendance is the sum of the averages of the units composing the group. For example: The principal of a two-room school should enter in item 4a the sum of the averages of the two rooms. The principal of a school containing several rooms whose work includes the eight grades and a high school should enter in item 4a the sum of the averages of the grade rooms and of the high school. The superintendent of a city system of schools should enter in item 4a the sum of the averages of the various ward schools and of the high school. The principal of each ward school and the principal of each high school should report the average for his school found by adding the averages of the various rooms or session groups composing the school.)
5. Number of eighth grade graduates or promotions..... 72..... Boys..... 30..... Girls..... 42..... Total..... 72.....
6. Number of elementary tuition pupils attending this school..... Boys..... Girls..... Total.....
7. Number of high school graduates..... Boys..... Girls..... Total.....
8. Number of high school tuition pupils attending this school..... Boys..... Girls..... Total.....
9. Superintendents who do no teaching..... Men..... 1..... Women..... Total..... 1.....
- 9a. Principals and Supervisors who teach less than half time..... Men..... Women..... Total..... 1.....
10. Teachers and principals who teach half time or more (if more than one person has taught in a room count only the one teaching at the end of the term)..... Men..... 5..... Women..... 5..... Total..... 10.....
11. Total number of all teaching positions (sum of 9, 9a, and 10) (show only the actual positions)..... Men..... 1..... Women..... 28..... Total..... 29.....
- 11a. Total number of high school teaching positions (show only the actual positions)..... Men..... Women..... Total.....
12. Qualifications of all teachers: (Give only highest graduation or attendance of each teacher at work at end of term. The total will not be more than No. 11 above.) Number graduates of a College and State Normal School..... A College only.....  
A Normal School only..... A Four-year High School only..... 25..... If not a graduate, how many have attended a College.....? A State Normal School..... 25.....? A High School.....?
- 12a. Qualifications of high school teachers: (Give only highest graduation or attendance of each teacher at work at end of term. The total will not be more than 11a above.) Number graduates of a College and State Normal School..... A College only.....  
A Normal School only..... A Four-year High School only..... If not a graduate, how many have attended a College.....? A State Normal School.....? A High School.....?
13. Vacancies of teachers caused by death.....by resignation.....by change for spring term.....Total.....
15. Amount of annual salary earned by all teachers: Men, \$..... 2500.....; Women, \$..... 23035..... Total, \$..... 25035.....  
(If a position has been held by more than one person, give as annual salary the sum earned by all for the teacher holding the position at end of term.)
- 15a. Amount of annual salary earned by high school teachers only: Men, \$.....; Women, \$.....; Total, \$.....
16. Number of teachers contributing to the Illinois State Teachers' Pension and Retirement Fund..... 21.....; Amount contributed this year, \$..... 170.....
17. Number of all public school houses in the district..... Public..... Rented..... Total..... 5.....
- 17a. Number of school houses in the district used by high schools only..... Public..... Rented..... Total.....
18. Number of sittings for study: (A double seat to be counted as one sitting).....
20. Give length of service in this district of teachers holding positions at close of school: 1 yr..... 3..... 2 yrs..... 2.....  
3 yrs..... 8..... 4 yrs..... 5..... 5 yrs..... 2..... 6 yrs..... 1..... 7 yrs..... 8 yrs..... 9 yrs.....  
10 yrs..... 11 yrs..... 2..... 12 yrs..... 1..... 13 yrs..... 1..... 14 yrs..... 15 yrs..... 16 yrs.....  
17 yrs..... 18 yrs..... 19 yrs..... 20 yrs or more..... 2..... (Count part of a year as a year. Total should equal that of No. 11.)
24. Number of volumes in library exclusive of supplementary reading books for class use..... 950.....
26. Number of private schools in the district..... Number of teachers employed..... Men..... Women..... Number of pupils enrolled in elementary grades (1st to 8th): Boys..... Girls..... Secondary Grades (9th to 12th): Boys..... Girls.....  
College Grades (13th to 16th): Boys..... Girls.....
27. Promotion of health: Number of nurses employed..... Physicians..... Amount paid nurses \$..... Physicians \$.....  
Number of pupils examined for physical defects or contagion..... Number found affected..... Number of homes visited by nurse or inspecting officer.....
- Promotion of attendance: Number of truant officers employed..... Men..... Women..... Amount paid truant officers \$.....  
Number of children not attending school between the ages of 7 and 14..... 14 and 16..... Number of children arrested and placed in charge of teacher..... Number sentenced by a court..... Number of school and age certificates issued.....
29. Number of years of high school work offered in the following courses: Academic (classical, scientific, etc.)..... Commercial.....  
Technical (M. T.)..... Agricultural..... Domestic Science..... Normal..... Vocational (under State Board).....

14. SALARIES OF TEACHERS.

Enter in the following table the number of teachers in day schools paid the different annual salaries.

Elementary					Secondary				
Elementary					Secondary				
Salaries	Men	Women	Men	Women	Salaries	Men	Women	Men	Women
Less than \$200.....					\$1,200 to \$1,299.....				
\$200 to \$299.....					\$1,300 to \$1,399.....				
\$300 to \$399.....					\$1,400 to \$1,499.....				
\$400 to \$499.....					\$1,500 to \$1,599.....				
\$500 to \$599.....					\$1,600 to \$1,699.....				
\$600 to \$699.....					\$1,700 to \$1,799.....				
\$700 to \$799.....	2				\$1,800 to \$1,899.....				
\$800 to \$899.....	25				\$1,900 to \$1,999.....				
\$900 to \$999.....					\$2,000 to \$2,499.....	1			
\$1,000 to \$1,099.....					\$2,500 to \$2,999.....				
\$1,100 to \$1,199.....					\$3,000 and over.....				
					Total (same as Item 11)....				

58. SPECIAL REPORT IF A CONSOLIDATED SCHOOL.

(a) Dist. No.....; (b) Number of Districts consolidated.....; (c) Are the grade school pupils all assembled in one building?..... If not, in how many buildings?..... (d) Area in square miles.....; (e) Number of teachers: Elementary.....; High School.....; (f) Number of students: Elementary.....; High School.....; (g) Check Vocational Subjects taught; Agriculture.....; Manual Training....., Sewing....., Cooking.....; (h) Transportation furnished by district. Yes....., No.....; Number of vehicles.....; Annual cost of transportation \$..... (Note: If vehicle is owned by the district, one-fifth of its cost should be counted as a part of the annual cost of transportation.)

Teacher's Annual Report

FOR

School

Under

Dist. No. 4 Macoupin County, Illinois, for school year ending June 30, 1923.

Building is in Township 12 Range 6

School closed May 16 1924

Made by McMayhew

Teacher or Principal Under

P. O.

Filed May 20 1924

George W. Solomon, Co. Supt.



# TEACHERS' ANNUAL REPORT

SCHOOL YEAR 1924-1925

To the Teacher or Superintendent: The State and National authorities need and demand all the data called for in this report. You are rendering a valuable service by a careful and prompt filling out of each item. For common schools of one teacher, items with starred numbers only are to be filled. In schools of two or more teachers the data should be collected by the Superintendent or Principal and embodied in one report. Two copies are to be filed with the County Superintendent within one week after the close of school.

\* 1. Name of School Urders Dist. 4 Macoupin County, Illinois.  
Enrollment Note: All whose names have been enrolled during the year should be reported and classified as they are at the close of the year before promotion, or at the time they may have left the district.

Elementary

Kindergarten		1st Yr.		2nd Yr.		3rd Yr.		4th Yr.		5th Yr.		6th Yr.		7th Yr.		8th Yr.		Total	
Boys	Girls	Boys	Girls	Boys	Girls	Boys	Girls	Boys	Girls	Boys	Girls	Boys	Girls	Boys	Girls	Boys	Girls	Boys	Girls
<del>50</del>	<del>63</del>	59	63	85	60	85	60	78	61	71	56	75	80	51	60	38	37	504	466

\* 2. /Secondary (High)—(See note after "Enrollment" above).

9th Yr.		10th Yr.		11th Yr.		12th Yr.		Total		Grand Total (Elem. and High)	
Boys	Girls	Boys	Girls	Boys	Girls	Boys	Girls	Boys	Girls	Boys	Girls

\* 2a. How many of the above were enrolled this year in some other district of this state before enrolling in this district Boys 40 Girls 27 Total 67

\* 3e. Length of school year in months nine

\* 3f. Actual number of days school was in session 183

\* 4. Total days attendance of all pupils enrolled in both elementary and high school 150771

\* 4a. Average daily attendance of all pupils enrolled in both elementary and high school (See note below 4c) 823.5

4b. Total days attendance of all high school pupils (above 8th grade)

4c. Average daily attendance of all high school pupils (above 8th grade) (See note below)

(Note—The average daily attendance in a one-room school is found by dividing the total days attendance by the number of days the school was actually in session. In schools of two or more rooms, or in schools whose records of attendance are kept by session teachers, the average daily attendance is the sum of the averages of the units composing the group. For example: The principal of a two-room school should enter in item 4a the sum of the averages of the two rooms. The principal of a school containing several rooms whose work includes the eight grades and a high school should enter in item 4a the sum of the averages of the grade rooms and of the high school. The superintendent of a city system of schools should enter in item 4a the sum of the averages of the various ward schools and of the high school. The principal of each ward school and the principal of each high school should report the average for his school found by adding the averages of the various rooms or session groups composing the school.)

\* 5. Number of eighth grade graduates or promotions sixty three Boys 27 Girls 36 Total 63

\* 6. Number of elementary tuition pupils attending this school none Boys \_\_\_\_\_ Girls \_\_\_\_\_ Total \_\_\_\_\_

7. Number of high school graduates Boys \_\_\_\_\_ Girls \_\_\_\_\_ Total \_\_\_\_\_

8. Number of high school tuition pupils attending this school Boys \_\_\_\_\_ Girls \_\_\_\_\_ Total \_\_\_\_\_

9. Superintendents who do no teaching one Men 1 Women \_\_\_\_\_ Total 1

9a. Principals and Supervisors who teach less than half time Men \_\_\_\_\_ Women \_\_\_\_\_ Total \_\_\_\_\_

\* 10. Teachers and principals who teach half time or more (if more than one person has taught in a room count only the one teaching at the end of the term) Men 4 Women 5 Total 9

\* 11. Total number of all teaching positions (sum of 9, 9a, and 10) (show only the actual positions) Men 1 Women 22 Total 23

11a. Total number of high school teaching positions (show only the actual positions) Men \_\_\_\_\_ Women \_\_\_\_\_ Total \_\_\_\_\_

\* 12. Qualifications of all teachers: (Give only highest graduation or attendance of each teacher at work at end of term. The total will not be more than No. 11 above). Number graduates of a College and State Normal School 2 A College only 1

A Normal School only 1 A Four-year High School only 25 If not a graduate, how many have attended a College 4 A State Normal School 24 A High School 2

12a. Qualifications of high school teachers: (Give only highest graduation or attendance of each teacher at work at end of term. The total will not be more than 11a above.) Number graduates of a College and State Normal School \_\_\_\_\_ A College only \_\_\_\_\_

A Normal School only \_\_\_\_\_ A Four-year High School only \_\_\_\_\_ If not a graduate, how many have attended a College \_\_\_\_\_ A State Normal School \_\_\_\_\_ A High School \_\_\_\_\_

\* 13. Vacancies of teachers caused by death 1 by resignation 1 by change for spring term 2 Total \_\_\_\_\_

\* 15. Amount of annual salary earned by all teachers: Men, \$ 2215; Women, \$ 23490 Total, \$ 25708

(If a position has been held by more than one person, give as annual salary the sum earned by all for the teacher holding the position at end of term.)

15a. Amount of annual salary earned by high school teachers only: Men, \$ \_\_\_\_\_; Women, \$ \_\_\_\_\_; Total, \$ \_\_\_\_\_

\* 16. Number of teachers contributing to the Illinois State Teachers' Pension and Retirement Fund \_\_\_\_\_; Amount contributed this year, \$ \_\_\_\_\_

\* 17. Number of all public school houses in the district Public 5 Rented \_\_\_\_\_ Total 5

17a. Number of school houses in the district used by high schools only Public \_\_\_\_\_ Rented \_\_\_\_\_ Total \_\_\_\_\_

\* 18. Number of sittings for study: (A double seat to be counted as one sitting) 997

\* 20. Give length of service in this district of teachers holding positions at close of school: 1 yr. 5 2 yrs. 2

3 yrs. 2 4 yrs. 6 5 yrs. 4 6 yrs. 1 7 yrs. 1 8 yrs. \_\_\_\_\_ 9 yrs. \_\_\_\_\_

10 yrs. \_\_\_\_\_ 11 yrs. \_\_\_\_\_ 12 yrs. 2 13 yrs. 1 14 yrs. 1 15 yrs. \_\_\_\_\_ 16 yrs. \_\_\_\_\_

17 yrs. \_\_\_\_\_ 18 yrs. \_\_\_\_\_ 19 yrs. \_\_\_\_\_ 20 yrs. or more 2 (Count part of a year as a year. Total should equal that of No. 11.)

\* 24. Number of volumes in library exclusive of supplementary reading books for class use 591

\* 26. Number of private schools in the district none Number of teachers employed \_\_\_\_\_ Men \_\_\_\_\_ Women \_\_\_\_\_ Number of pupils enrolled in elementary grades (1st to 8th): Boys \_\_\_\_\_ Girls \_\_\_\_\_ Secondary Grades (9th to 12th): Boys \_\_\_\_\_ Girls \_\_\_\_\_ College Grades (13th to 16th): Boys \_\_\_\_\_ Girls \_\_\_\_\_

\* 27. Promotion of health: Number of nurses employed 1 Physicians \_\_\_\_\_ Amount paid nurses \$ 150.00 Physicians \$ \_\_\_\_\_ Number of pupils examined for physical defects or contagion \_\_\_\_\_ Number found affected \_\_\_\_\_ Number of homes visited by nurse or inspecting officer \_\_\_\_\_

Promotion of attendance: Number of truant officers employed \_\_\_\_\_ Men \_\_\_\_\_ Women \_\_\_\_\_ Amount paid truant officers \$ \_\_\_\_\_

Number of children not attending school between the ages of 7 and 14 \_\_\_\_\_ 14 and 16 \_\_\_\_\_ Number of children arrested and placed in charge of teacher \_\_\_\_\_ Number sentenced by a court \_\_\_\_\_ Number of school and age certificates issued \_\_\_\_\_

29. Number of years of high school work offered in the following courses: Academic (classical, scientific, etc.) \_\_\_\_\_ Commercial \_\_\_\_\_

Technical (M. T.) \_\_\_\_\_ Agricultural \_\_\_\_\_ Domestic Science \_\_\_\_\_ Normal \_\_\_\_\_ Vocational (under State Board) \_\_\_\_\_

(IMPORTANT—Two items to be filled are on back of this sheet.)

(OVER)

14. SALARIES OF TEACHERS.

Enter in the following table the number of teachers in day schools paid the different annual salaries.

Elementary					Secondary				
Elementary					Secondary				
Salaries	Men	Women	Men	Women	Salaries	Men	Women	Men	Women
Less than \$200					\$1,200 to \$1,299				
\$200 to \$299					\$1,300 to \$1,399				
\$300 to \$399					\$1,400 to \$1,499				
\$400 to \$499					\$1,500 to \$1,599				
\$500 to \$599					\$1,600 to \$1,699				
\$600 to \$699					\$1,700 to \$1,799				
\$700 to \$799	2				\$1,800 to \$1,899				
\$800 to \$899	20				\$1,900 to \$1,999				
\$900 to \$999	5				\$2,000 to \$2,499	1			
\$1,000 to \$1,099					\$2,500 to \$2,999				
\$1,100 to \$1,199					\$3,000 and over				
Total (same as Item 11)....									

58. SPECIAL REPORT IF A CONSOLIDATED SCHOOL.

(a) Dist. No.....; (b) Number of Districts consolidated.....; (c) Are the grade school pupils all assembled in one building?..... If not, in how many buildings?..... (d) Area in square miles.....; (e) Number of teachers: 'Elementary.....; High School.....; (f) Number of students; Elementary.....; High School.....; (g) Check Vocational Subjects taught; Agriculture.....; Manual Training....., Sewing....., Cooking.....; (h) Transportation furnished by district. Yes....., No.....; Number of vehicles.....; Annual cost of transportation \$..... (Note: If vehicle is owned by the district, one-fifth of its cost should be counted as a part of the annual cost of transportation.)

Teachers' Annual Report

FOR

School

County,

Dist. No. 4

Illinois, for school year ending June 30, 1925.

Building is in Township 12 Range

School closed

Made by

Teacher or

P. O.

Filed

1925

Co. Supt.

# TEACHERS' ANNUAL REPORT

SCHOOL YEAR 1925-1926

To the Teacher or Superintendent: The State and National authorities need and demand all the data called for in this report. You are rendering a valuable service by a careful and prompt filling out of each item. For common schools of one teacher, items with starred numbers only are to be filled. In schools of two or more teachers the data should be collected by the Superintendent or Principal and embodied in one report. Two copies are to be filed with the County Superintendent within one week after the close of school.

- \* 1. Name of School Union Dist. Four No. Macoupin County, Illinois.  
Enrollment; Note: All whose names have been enrolled during the year should be reported and classified as they are at the close of the year before promotion, or at the time they may have left the district.

	Kindergarten		1st Yr.		2nd Yr.		3rd Yr.		4th Yr.		5th Yr.		6th Yr.		7th Yr.		8th Yr.		Total	
	Boys	Girls	Boys	Girls	Boys	Girls	Boys	Girls	Boys	Girls	Boys	Girls	Boys	Girls	Boys	Girls	Boys	Girls	Boys	Girls
			60	43	32	39	36	37	55	46	58	45	55	54	44	39	41	39	373	342

- \* 2. Enrollment Secondary (High)—(See note after "Enrollment" above).

	9th Yr.		10th Yr.		11th Yr.		12th Yr.		Total		Grand Total (Elem. and High.)	
	Boys	Girls	Boys	Girls	Boys	Girls	Boys	Girls	Boys	Girls	Boys	Girls

- \* 2a. How many of the above were enrolled this year in some other district of this state before enrolling in this district. 30 Boys 14 Girls 16 Total 30

- \* 3a. Length of school year in months. nine

- \* 3f. Actual number of days school was in session. 188

- \* 3g. Number of days when fewer than 5 pupils were present. none

- \* 4. Total days attendance of all pupils enrolled in both elementary and high school. 125810

- \* 4a. Average daily attendance of all pupils enrolled in both elementary and high school (See note below 4c). 680

- \* 4b. Total days attendance of all high school pupils (above 8th grade).

- \* 4c. Average daily attendance of all high school pupils (above 8th grade) (See note below)  
(Note—The average daily attendance in a one-room school is found by dividing the total days attendance by the number of days the school was actually in session. In schools of two or more rooms, or in schools whose records of attendance are kept by session teachers, the average daily attendance is the sum of the averages of the units composing the group. For example: The principal of a two-room school should enter in Item 4a the sum of the averages of the two rooms. The principal of a school containing several rooms whose work includes the eight grades and a high school should enter in Item 4a the sum of the averages of the grade rooms and of the high school. The superintendent of a city system of schools should enter in Item 4a the sum of the averages of the various ward schools and of the high school. The principal of each ward school and the principal of each high school should report the average for his school found by adding the averages of the various rooms or session groups composing the school.)

- \* 5. Number of eighth grade graduates or promotions. Boys 30 Girls 35 Total 65

- \* 6. Number of elementary tuition pupils attending this school. Boys ✓ Girls ✓ Total ✓

- \* 7. Number of high school graduates. Boys \_\_\_\_\_ Girls \_\_\_\_\_ Total \_\_\_\_\_

- \* 8. Number of high school tuition pupils attending this school. Boys \_\_\_\_\_ Girls \_\_\_\_\_ Total \_\_\_\_\_

- \* 9. Superintendents who do no teaching. Men 1 Women ✓ Total 1

- \* 9a. Principals and Supervisors who teach less than half time. Men \_\_\_\_\_ Women \_\_\_\_\_ Total \_\_\_\_\_

- \* 10. Teachers and principals who teach half time or more (If more than one person has taught in a room count only the one teaching at the end of the term). Men \_\_\_\_\_ Women \_\_\_\_\_ Total \_\_\_\_\_

- \* 11. Total number of all teaching positions (sum of 9, 9a, and 10) (show only the actual positions). Men 1 Women 26 Total 27

- \* 11a. Total number of high school teaching positions (show only the actual positions). Men \_\_\_\_\_ Women \_\_\_\_\_ Total \_\_\_\_\_

- \* 12. Qualifications of all teachers. (Total not to exceed total of item 11.) Number of graduates of College and State Normal School \_\_\_\_\_; College only \_\_\_\_\_; Normal School only 1; Graduates of 4 year High School and attended College 3 years \_\_\_\_\_, College 2 years 2, College or Normal School 1 year 3, neither College nor Normal School 21; Attended High School only three years \_\_\_\_\_, two years ✓, one year ✓.

- \* 12a. Qualifications of High School teachers. (Total not to exceed total of item 11a) Number of graduates of College and State Normal School \_\_\_\_\_; College only \_\_\_\_\_; Normal School only \_\_\_\_\_; Graduates of 4 year high school and attended College three years \_\_\_\_\_, College two years, College or Normal School one year \_\_\_\_\_, neither College nor Normal School \_\_\_\_\_; Attended High School only three years \_\_\_\_\_, two years \_\_\_\_\_, one year \_\_\_\_\_.

- \* 13. Vacancies of teachers caused by death \_\_\_\_\_ by resignation 1 by change for spring term ✓ Total 1

- \* 15. Amount of annual salary earned by all teachers: Men, \$ 2215; Women, \$ 22725; Total, \$ 24940  
(If a position has been held by more than one person, give as annual salary the sum earned by all for the teacher holding the position at end of term.)

- \* 15a. Amount of annual salary earned by high school teachers only: Men, \$ \_\_\_\_\_; Women, \$ \_\_\_\_\_; Total, \$ \_\_\_\_\_

- \* 16. Number of teachers contributing to the Illinois State Teachers' Pension and Retirement Fund 21; Amount contributed this year, \$ 163

- \* 17. Number of all public school houses in the district 5 Public \_\_\_\_\_ Rented ✓ Total 5

- \* 17a. Number of school houses in the district used by high schools only \_\_\_\_\_ Public \_\_\_\_\_ Rented \_\_\_\_\_ Total \_\_\_\_\_

- \* 18. Number of sittings for study: (A double seat to be counted as one sitting) 924

- \* 20. Give length of service in this district of teachers holding positions at close of school: 1 yr. 2 2 Yrs. 2  
3 yrs. 5 4 yrs. 3 5 yrs. 8 6 yrs. \_\_\_\_\_ 7 yrs. 1 8 yrs. \_\_\_\_\_ 9 yrs. \_\_\_\_\_  
10 yrs. \_\_\_\_\_ 11 yrs. 2 12 yrs. \_\_\_\_\_ 13 yrs. \_\_\_\_\_ 14 yrs. \_\_\_\_\_ 15 yrs. 2 16 yrs. \_\_\_\_\_  
17 yrs. \_\_\_\_\_ 18 yrs. \_\_\_\_\_ 19 yrs. \_\_\_\_\_ 20 yrs. or more 2 (Count part of a year as a year. Total should equal that of No. 11.)

- \* 24. Number of volumes in library exclusive of supplementary reading books for class use 606

- \* 26. Number of private schools in the district ✓ Number of teachers employed ✓ Men ✓ Women 2 Number of pupils enrolled in elementary grades (1st to 8th): Boys \_\_\_\_\_ Girls \_\_\_\_\_ Secondary Grades (9th to 12th) Boys \_\_\_\_\_ Girls \_\_\_\_\_ College Grades (13th to 16th): Boys \_\_\_\_\_ Girls \_\_\_\_\_

- \* 27. Promotion of health: Number of nurses employed 1 physicians \_\_\_\_\_ Amount paid nurses \$ 1450 physicians \$ \_\_\_\_\_  
Number of pupils examined for physical defects or contagion \_\_\_\_\_ Number found affected \_\_\_\_\_ Number of homes visited by nurse or inspecting officer \_\_\_\_\_

- Promotion of attendance: Number of truant officers employed \_\_\_\_\_ Men ✓ Women ✓ Amount paid truant officers \$ \_\_\_\_\_  
Number of children not attending school between the ages of 7 and 14 \_\_\_\_\_ 14 and 16 \_\_\_\_\_ Number of children arrested and placed in charge of teacher \_\_\_\_\_ Number sentenced by a court \_\_\_\_\_ Number of school and age certificates issued \_\_\_\_\_

- \* 29. Number of years of high school work offered in the following courses: Academic (classical, scientific, etc.) \_\_\_\_\_ Commercial \_\_\_\_\_  
Trades and Industries \_\_\_\_\_ Agricultural \_\_\_\_\_ Domestic Science \_\_\_\_\_ Normal \_\_\_\_\_ Vocational (under State Board) \_\_\_\_\_  
(IMPORTANT—Six items to be filled are on back of this sheet.)  
(OVER)

# 14. SALARIES OF TEACHERS

Enter in the following table the number of teachers in day schools paid the different annual salaries.

Elementary					Secondary				
Salaries	Men	Women	Men	Women	Salaries	Men	Women	Men	Women
Less than \$200					\$1,200 to \$1,299				
\$200 to \$299					\$1,300 to \$1,399				
\$300 to \$399					\$1,400 to \$1,499				
\$400 to \$499					\$1,500 to \$1,599				
\$500 to \$599					\$1,600 to \$1,699				
\$600 to \$699					\$1,700 to \$1,799				
\$700 to \$799	2	2			\$1,800 to \$1,899				
\$800 to \$899	1	14			\$1,900 to \$1,999				
\$900 to \$999	10	10			\$2,000 to \$2,499	1			
\$1,000 to \$1,099					\$2,500 to \$2,999				
\$1,100 to \$1,199					\$3,000 and over				
Total (same as Item 11)						1	27		

## 58. SPECIAL REPORT IF A CONSOLIDATED SCHOOL.

(a) Dist. No. \_\_\_\_\_; (b) Number of Districts consolidated \_\_\_\_\_; (c) Are the grade school pupils all assembled in one building? \_\_\_\_\_ If not, in how many buildings? \_\_\_\_\_ (d) Area in square miles \_\_\_\_\_; (e) Number of teachers: Elementary \_\_\_\_\_; High School \_\_\_\_\_; (f) Number of students: Elementary \_\_\_\_\_; High School \_\_\_\_\_; (g) Check Vocational Subjects taught: Agriculture \_\_\_\_\_; Manual Training \_\_\_\_\_; Sewing \_\_\_\_\_; Cooking \_\_\_\_\_; (h) Transportation furnished by district. Yes \_\_\_\_\_, No \_\_\_\_\_; Number of vehicles \_\_\_\_\_; Annual cost of transportation \$ \_\_\_\_\_ (Note: If vehicle is owned by the district, one-fifth of its cost should be counted as a part of the annual cost of transportation.)

## 59. SPECIAL REPORT ON PUBLIC SCHOOL KINDERGARTENS.

(a) Number in district \_\_\_\_\_; (b) Enrollment: Boys \_\_\_\_\_; Girls \_\_\_\_\_; (c) Number teachers \_\_\_\_\_; (d) Salaries of teachers \$ \_\_\_\_\_

## 60. SPECIAL REPORT ON DEAF AND DUMB AND BLIND CHILDREN.

(a) Number, ages 3 to 21, in district \_\_\_\_\_; (b) Number in State or private institutions \_\_\_\_\_; (c) Number in special school or classes of district \_\_\_\_\_; (d) Number of teachers: Men \_\_\_\_\_; Women \_\_\_\_\_; (e) Number of separate schools \_\_\_\_\_; (f) Value of building, grounds and equipment \$ \_\_\_\_\_

## 61. SPECIAL REPORT ON CRIPPLED CHILDREN.

(a) Number, ages 5 to 21, reported by truant officer \_\_\_\_\_; (b) Number enrolled in special district school or classes: Boys \_\_\_\_\_; Girls \_\_\_\_\_; (c) Number teachers: Men \_\_\_\_\_; Women \_\_\_\_\_; (d) Number separate schools \_\_\_\_\_; (e) Value of building, grounds and equipment \$ \_\_\_\_\_

## 62. SPECIAL REPORT ON DELINQUENT CHILDREN.

(a) Number schools \_\_\_\_\_; (b) Enrollment: Boys \_\_\_\_\_; Girls \_\_\_\_\_; (c) Number teachers: Men \_\_\_\_\_; Women \_\_\_\_\_; (d) Number separate schools \_\_\_\_\_; (e) Value of building, grounds and equipment \$ \_\_\_\_\_

Teachers' Annual Report

FOR

School  
County,  
Dist. No. of Macoupin  
Illinois, for school year ending June 30, 1926.

Building is in Township Range

School closed May 24 1926

Made by  
Teacher or Principal.  
P. O.

Filed June 1, 1926

George W. Solomon  
Co. Supt.

TEACHER'S ANNUAL REPORT

SCHOOL YEAR 1943-1944

To the Teacher or Superintendent: The State and National authorities need and demand all the data called for in this report. You are rendering a valuable service by a careful and prompt filling out of each item. For common schools of one teacher, items with starred numbers only are to be filled. In schools of two or more teachers the data should be collected by the Superintendent or Principal and embodied in one report. One copy is to be filed with the County Superintendent within one week after the close of school.

Name of School Virden Grade Dist. No. 4 Macoupin County, Illinois

Enrollment; Note: All whose names have been enrolled during the year should be reported and classified as they are at the close of the year before promotion, or at the time they may have left the district.

1. TEACHERS AND ENROLLMENT

Elementary (See note after "Enrollment" above.)

Number of Teachers			Kinder- garten	1st Yr.	2nd Yr.	3rd Yr.	4th Yr.	5th Yr.	6th Yr.	7th Yr.	8th Yr.	Total
Men	Women	Total										
1	17	18		55	47	49	51	47	52	51	49	401

High School (See note after "Enrollment" above.)

Number of Teachers			9th Yr.	10th Yr.	11th Yr.	12th Yr.	Post Graduates	Total	Grand Total (Elem. and High)
Men	Women	Total							

- \* 1a. How many of the above were enrolled this year in some other district of this state before enrolling in this district: Elementary 37 High School \_\_\_\_\_
- \* 2. Length of school year in months nine
- \* 2a. Actual number of days school was in session 185
- \* 3. Total days attendance of all pupils enrolled in grades one to eight inclusive 63427
- \* 3a. Average daily attendance of all pupils enrolled in grades one to eight inclusive. (See note below 3cx) 342.85
- \* 3x. Total days attendance of all pupils in grades one to eight inclusive, exclusive of tuition pupils 63427
- \* 3ax. Average daily attendance of all pupils in grades one to eight inclusive, exclusive of tuition pupils (must agree with item 3a of State Aid claim) 342.85
- 3b. Total days attendance of all pupils enrolled in high schools \_\_\_\_\_
- 3c. Average daily attendance of all pupils enrolled in high school. (See note below 3cx) \_\_\_\_\_
- 3bx. Total days attendance of all pupils enrolled in high school, exclusive of tuition pupils \_\_\_\_\_
- 3cx. Average daily attendance of all pupils enrolled in high school, exclusive of tuition pupils \_\_\_\_\_
- (Note—The average daily attendance in a one-room school is found by dividing the total days attendance by the number of days the school was actually in session. In schools of two or more rooms, or in schools whose records of attendance are kept by session teachers, the average daily attendance is the sum of the averages of the units composing the group. For example: The principal of a two-room school should enter in Item 3a the sum of the averages of the two rooms. The superintendent of a city system of schools should enter in Item 3a the sum of the averages of the various ward schools. The principal of each ward school and the principal of each high school should report the average for his school found by adding the averages of the various rooms or session groups composing the school.)
- \* 4. Number of eighth grade graduates or promotions \_\_\_\_\_ Total 47
- \* 5. Number of elementary tuition pupils attending this school \_\_\_\_\_ Total 0
6. Number of high school graduates (Four year) \_\_\_\_\_ Boys \_\_\_\_\_ Girls \_\_\_\_\_ Total \_\_\_\_\_
7. Number of high school tuition pupils attending this school \_\_\_\_\_ Total \_\_\_\_\_
- \* 8. Number of school buildings in the district used by elementary school 3 Public 3 Rented ✓ Total 3
- 8a. Number of school buildings in the district used by high school \_\_\_\_\_ Public \_\_\_\_\_ Rented \_\_\_\_\_ Total \_\_\_\_\_
- \* 14. Number of libraries 1
- \* 14a. Number of volumes in libraries exclusive of supplementary reading books for class use 1819
- \* 16. Number of private schools in the district 0 Number of teachers employed ✓ Men ✓ Women ✓ Number of pupils enrolled in elementary grades (1st to 8th): Boys ✓ Girls ✓ Secondary Grades (9th to 12th): Boys ✓ Girls ✓
- \* 17. Promotion of health: Number of nurses employed \_\_\_\_\_ physicians ✓ Amount paid nurses, \$ ✓ (Dollars only) physicians, \$ ✓ (Dollars only)
- Number of pupils examined for physical defects or contagion ✓ Number found affected ✓ Number of homes visited by nurse or inspecting officer ✓
- Promotion of attendance: Number of truant officers employed ✓ Men ✓ Women ✓ Amount paid truant officers, \$ ✓ (Dollars only)
- Number of children not attending school between the ages of 7 and 14 1 14 and 16 2 Number of children arrested and placed in charge of teacher \_\_\_\_\_ Number sentenced by a court \_\_\_\_\_ Number of school and age certificates issued \_\_\_\_\_

(IMPORTANT—Three items to be filled are on back of this sheet.)

(OVER)

107. SPECIAL REPORT IF A CONSOLIDATED SCHOOL

(a) Dist. No. \_\_\_\_\_; (b) Number of Districts consolidated \_\_\_\_\_; (c) Are the grade school pupils all assembled in one building? \_\_\_\_\_; If not, in how many buildings? \_\_\_\_\_; (d) Area in square miles \_\_\_\_\_; (e) Number of teachers: Elementary \_\_\_\_\_; High School \_\_\_\_\_; (f) Number of students: Elementary \_\_\_\_\_; High School \_\_\_\_\_; (g) Check Vocational Subjects taught: Agriculture \_\_\_\_\_; Manual Training \_\_\_\_\_; Sewing \_\_\_\_\_; Cooking \_\_\_\_\_; (h) Transportation furnished by district. Yes \_\_\_\_\_; No \_\_\_\_\_

108. SPECIAL REPORT ON PUBLIC SCHOOL KINDERGARTENS

(a) Number in district \_\_\_\_\_; (b) Enrollment: Boys \_\_\_\_\_; Girls \_\_\_\_\_; (c) Number teachers \_\_\_\_\_; (d) Salaries of teachers, \$ \_\_\_\_\_; (e) Current expenses for year, \$ \_\_\_\_\_

Blanks furnished by VERNON L. NICKELL, SUPERINTENDENT OF PUBLIC INSTRUCTION, Springfield, Illinois

Other information which may be requested by County Superintendent.

Part time teachers (not substitutes)

Name

Subject

Russell Pence  
\_\_\_\_\_  
\_\_\_\_\_  
\_\_\_\_\_  
\_\_\_\_\_  
\_\_\_\_\_  
\_\_\_\_\_  
\_\_\_\_\_

Band  
\_\_\_\_\_  
\_\_\_\_\_  
\_\_\_\_\_  
\_\_\_\_\_  
\_\_\_\_\_  
\_\_\_\_\_  
\_\_\_\_\_

Teacher's Annual Report

FOR

Grinden Grade School  
District No. 4 Macomb County,  
Illinois, for school year ending June 30, 1944.

Building is in Township 12 Range 6

School closed May 25th, 1944

Made by Harold J. Grinden  
Teacher or Principal

Grinden - Illinois P. O.

Filed \_\_\_\_\_, 1944

Co. Supt.

# TEACHER'S ANNUAL REPORT

SCHOOL YEAR 1944-1945

To the Teacher or Superintendent: The State and National authorities need and demand all the data called for in this report. You are rendering a valuable service by a careful and prompt filling out of each item. For common schools of one teacher, items with starred numbers only are to be filled. In schools of two or more teachers the data should be collected by the Superintendent or Principal and embodied in one report. One copy is to be filed with the County Superintendent within one week after the close of school.

Name of School Virden Grade Dist. No. 4. Macoupin County, Illinois

Enrollment Note: All whose names have been enrolled during the year should be reported and classified as they are at the close of the year before promotion, or at the time they may have left the district.

## 1. TEACHERS AND ENROLLMENT

Elementary (See note after "Enrollment" above.)

Number of Teachers			Kinder- garten	1st Yr.	2nd Yr.	3rd Yr.	4th Yr.	5th Yr.	6th Yr.	7th Yr.	8th Yr.	Total
Men	Women	Total										
1	17	18	*	49	43	44	48	46	45	48	47	370

High School (See note after "Enrollment" above.)

Number of Teachers			9th Yr.	10th Yr.	11th Yr.	12th Yr.	Post Graduates	Total	Grand Total (Elem. and High)
Men	Women	Total							

\* 1a. How many of the above were enrolled this year in some other district of this state before

enrolling in this district? Elementary 23 High School \_\_\_\_\_

\* 2. Length of school year in months Nine

\* 2a. Actual number of days school was in session 188

\* 3. Total days attendance of all pupils enrolled in grades one to eight inclusive 61341

\* 3a. Average daily attendance of all pupils enrolled in grades one to eight inclusive. (See note below 3cx) 326.22

\* 3x. Total days attendance of all pupils in grades one to eight inclusive, exclusive of tuition pupils. 60977

\* 3ax. Average daily attendance of all pupils in grades one to eight inclusive, exclusive of tuition pupils (must agree with item 6a of State Aid claim) 324.34

3b. Total days attendance of all pupils enrolled in high schools ✓

3c. Average daily attendance of all pupils enrolled in high school. (See note below 3cx) ✓

3bx. Total days attendance of all pupils enrolled in high school, exclusive of tuition pupils. ✓

3cx. Average daily attendance of all pupils enrolled in high school, exclusive of tuition pupils. ✓

(Note—The average daily attendance in a one-room school is found by dividing the total days attendance by the number of days the school was actually in session. In schools of two or more rooms, or in schools whose records of attendance are kept by session teachers, the average daily attendance is the sum of the averages of the units composing the group. For example: The principal of a two-room school should enter in Item 3a the sum of the average of the two rooms. The superintendent of a city system of schools should enter in Item 3a the sum of the averages of the various ward schools. The principal of each ward school and the principal of each high school should report the average for his school found by adding the averages of the various rooms or session groups composing the school.)

\* 4. Number of eighth grade graduates or promotions \_\_\_\_\_ Total 46

\* 5. Number of elementary tuition pupils attending this school \_\_\_\_\_ Total 2

6. Number of high school graduates (Four year) \_\_\_\_\_ Boys \_\_\_\_\_ Girls \_\_\_\_\_ Total \_\_\_\_\_

7. Number of high school tuition pupils attending this school \_\_\_\_\_ Total \_\_\_\_\_

\* 8. Number of school buildings in the district used by elementary school \_\_\_\_\_ Public 3 Rented 0 Total 3

8a. Number of school buildings in the district used by high school \_\_\_\_\_ Public \_\_\_\_\_ Rented \_\_\_\_\_ Total \_\_\_\_\_

\*14. Number of libraries 1

\*14a. Number of volumes in libraries exclusive of supplementary reading books for class use 1975

\*16. Number of private schools in the district ✓ Number of teachers employed ✓ Men ✓ Women ✓ Number of pupils enrolled in elementary grades (1st to 8th): Boys ✓ Girls ✓ Secondary Grades (9th to 12th): Boys ✓ Girls ✓

\*17. Promotion of health: Number of nurses employed ✓ physicians ✓ Amount paid nurses, \$ ✓ (Dollars only) physicians, \$ ✓ (Dollars only)  
Number of pupils examined for physical defects or contagion ✓ Number found affected ✓ Number of homes visited by nurse or inspecting officer ✓

Promotion of attendance: Number of truant officers employed \_\_\_\_\_ Men ✓ Women ✓ Amount paid truant officers, \$ ✓ (Dollars only)

Number of children not attending school between the ages of 7 and 14 1 14 and 16 0 Number of children arrested and placed in charge of teacher ✓ Number sentenced by a court ✓ Number of school and age certificates issued ✓

(IMPORTANT—Three items to be filled are on back of this sheet.)

(OVER)

107. SPECIAL REPORT IF A CONSOLIDATED SCHOOL

(a) Dist. No. \_\_\_\_\_; (b) Number of Districts consolidated \_\_\_\_\_; (c) Are the grade school pupils all assembled in one building? \_\_\_\_\_; If not, in how many buildings? \_\_\_\_\_; (d) Area in square miles \_\_\_\_\_; (e) Number of teachers: Elementary \_\_\_\_\_; High School \_\_\_\_\_; (f) Number of students: Elementary \_\_\_\_\_; High School \_\_\_\_\_; (g) Check Vocational Subjects taught: Agriculture \_\_\_\_\_; Manual Training \_\_\_\_\_; Sewing \_\_\_\_\_; Cooking \_\_\_\_\_; (h) Transportation furnished by district. Yes \_\_\_\_\_; No \_\_\_\_\_

108. SPECIAL REPORT ON PUBLIC SCHOOL KINDERGARTENS

(a) Number in district \_\_\_\_\_; (b) Enrollment: Boys \_\_\_\_\_; Girls \_\_\_\_\_; (c) Number teachers \_\_\_\_\_; (d) Salaries of teachers, \$ \_\_\_\_\_; (e) Current expenses for year, \$ \_\_\_\_\_

Blanks furnished by VERNON L. NICKELL, SUPERINTENDENT OF PUBLIC INSTRUCTION, Springfield, Illinois.

Other information which may be requested by County Superintendent.

Part time teachers (not substitutes)

Name	Subject
_____	_____
_____	_____
_____	_____
_____	_____
_____	_____
_____	_____
_____	_____
_____	_____

Teacher's Annual Report

FOR

*Widow Grade* School  
District No. *4 Macoupin* County,  
Illinois, for school year ending June 30, 1945.  
Building is in Township *12* Range *6*

School closed *May 24*, 1945  
Made by *Harold Stults*  
Teacher or Principal

P. O.

Filed \_\_\_\_\_, 1945

Co. Supt.



TEACHER'S ANNUAL REPORT

SCHOOL YEAR 1945-1946

To the Teacher or Superintendent: The State and National authorities need and demand all the data called for in this report. You are rendering a valuable service by a careful and prompt filling out of each item. For common schools of one teacher, items with starred numbers only are to be filled. In schools of two or more teachers the data should be collected by the Superintendent or Principal and embodied in one report. One copy is to be filed with the County Superintendent within one week after the close of school.

Name of School VIRGEN GRADE Dist. No. 4 MACOUPIN County, Illinois

Enrollment Note: All whose names have been enrolled during the year should be reported and classified as they are at the close of the year before promotion, or at the time they may have left the district.

1. TEACHERS AND ENROLLMENT

sl.

Elementary (See note after "Enrollment" above.)													
Number of Teachers			Kinder- garten	1st Yr.	2nd Yr.	3rd Yr.	4th Yr.	5th Yr.	6th Yr.	7th Yr.	8th Yr.	Special Classes	Total
Men	Women	Total											
1	17	18		54	51	52	50	45	49	45	44		390

High School (See note after "Enrollment" above.)													
Number of Teachers			9th Yr.	10th Yr.	11th Yr.	12th Yr.	Post Graduates and Special Classes	Total	Grand Total (Elem. and High)				
Men	Women	Total											

- \* 1a. How many of the above were enrolled this year in some other district of this state before enrolling in this district? Elementary 32 High School \_\_\_\_\_
- \* 2. Length of school year in months 9
- \* 2a. Actual number of days school was in session 189  
(Same as item 4 on claim for state aid)
- \* 3. Total days attendance of all pupils enrolled in grades one to eight inclusive 62 959  
(Same as item 5 on claim for state aid)
- \* 3a. Average daily attendance of all pupils enrolled in grades one to eight inclusive. (See note below 3cx) 333.11  
(Same as item 6 on claim for state aid)
- \* 3x. Total days attendance of all pupils in grades one to eight inclusive, exclusive of tuition pupils 62 959  
(Same as item 5a on claim for state aid)
- \* 3ax. Average daily attendance of all pupils in grades one to eight inclusive, exclusive of tuition pupils 333.11  
(Same as item 6a on claim for state aid)
- 3b. Total days attendance of all pupils enrolled in high schools \_\_\_\_\_  
(Same as item 5 on claim for state aid)
- 3c. Average daily attendance of all pupils enrolled in high school. (See note below 3cx) \_\_\_\_\_  
(Same as item 6 on claim for state aid)
- 3bx. Total days attendance of all pupils enrolled in high school, exclusive of tuition pupils \_\_\_\_\_  
(Same as item 5a on claim for state aid)
- 3cx. Average daily attendance of all pupils enrolled in high school, exclusive of tuition pupils \_\_\_\_\_  
(Same as item 6ax on claim for state aid)
- (Note—The average daily attendance in a one-room school is found by dividing the total days attendance by the number of days the school was actually in session. In schools of two or more rooms, or in schools whose records of attendance are kept by session teachers, the average daily attendance is the sum of the average of the units composing the group. For example: The principal of a two-room school should enter in item 3a the sum of the average of the two rooms. The superintendent of a city system of schools should enter in item 3a the sum of the average of the various ward schools. The principal of each ward school and the principal of each high school should report the average for his school found by adding the averages of the various rooms or session groups composing the school.)
- \* 4. Number of eighth grade graduates or promotions \_\_\_\_\_ Total 44
- \* 5. Number of elementary tuition pupils attending the school \_\_\_\_\_ Total 0
6. Number of high school graduates (Four year) \_\_\_\_\_ Boys \_\_\_\_\_ Girls \_\_\_\_\_ Total \_\_\_\_\_
7. Number of high school pupils attending this school \_\_\_\_\_ Total \_\_\_\_\_
- \* 8. Number of school buildings in the district used by elementary school \_\_\_\_\_ Public 3 Rented \_\_\_\_\_ Total 3
- 8a. Number of school buildings in the district used by high school \_\_\_\_\_ Public \_\_\_\_\_ Rented \_\_\_\_\_ Total \_\_\_\_\_
- \* 14. Number of Libraries 1
- \* 14a. Number of volumes in libraries exclusive of supplementary reading books for class use 2344
- \* 16. Number of private schools in the district ☒ Number of teachers employed ☒ Men ☒ Women ☒ Number of pupils enrolled in elementary grades (1st to 8th): Boys ☒ Girls ☒ Secondary Grades (9th to 12th): Boys \_\_\_\_\_ Girls \_\_\_\_\_
- \* 17. Promotion of health: Number of nurses employed 0 physicians 0 Amount paid nurses, \$ 0 physicians, \$ 0  
(Dollars only) (Dollars only)
- Number of pupils examined for physical defects or contagion 0 Number found affected 0 Number of homes visited by nurse or inspecting officer 0
- Promotion of attendance: Number of truant officers employed \_\_\_\_\_ Men 1 Women 0 Amount paid truant officers, \$ 45  
(Dollars only)
- Number of children not attending school between the ages of 7 and 14 1 14 and 16 0 Number of children arrested and placed in charge of teacher 0 Number sentenced by a court 0 Number of school and age certificates issued 0

(IMPORTANT—Three items to be filled are on back of this sheet.)

107. SPECIAL REPORT IF A CONSOLIDATED SCHOOL

(a) Dist. No. \_\_\_\_\_; (b) Number of Districts consolidated \_\_\_\_\_; (c) Are the grade school pupils all assembled in one building? \_\_\_\_\_; If not, in how many buildings? \_\_\_\_\_; Area in square miles \_\_\_\_\_; (e) Number of teachers: Elementary \_\_\_\_\_; High School \_\_\_\_\_; (f) Number of students: Elementary \_\_\_\_\_; High School \_\_\_\_\_; (g) Check Vocational Subjects taught: Agriculture \_\_\_\_\_; Manual Training \_\_\_\_\_; Sewing \_\_\_\_\_; Cooking \_\_\_\_\_; (h) Transportation furnished by district. Yes \_\_\_\_\_; No \_\_\_\_\_

108. SPECIAL REPORT ON PUBLIC SCHOOL KINDERGARTENS

(a) Number in district \_\_\_\_\_; (b) Enrollment: Boys \_\_\_\_\_; Girls \_\_\_\_\_; (c) Number teachers \_\_\_\_\_; (d) Salaries of teachers, \$ \_\_\_\_\_; (e) Current expenses for year, \$ \_\_\_\_\_

Blanks furnished by VERNON L. NICKELL, SUPERINTENDENT OF PUBLIC INSTRUCTION, Springfield, Illinois.

Other information which may be requested by County Superintendent.

Part time teachers (not substitutes)

Name	Subject

Teacher's Annual Report

FOR

*Virden Elementary* School

District No. *4* *Macoupin* County, Illinois, for school year ending June 30, 1946.

Building is in Township *12* Range *6*

School closed *May 29*, 1946

Made by

*Harold Stahl*  
Teacher or Principal

*Virden* P. O.

Filed \_\_\_\_\_, 1946

Co. Supt.

# TEACHER'S ANNUAL REPORT

SCHOOL YEAR 1946-1947

To the Teacher or Superintendent: The State and National authorities need and demand all the data called for in this report. You are rendering a valuable service by a careful and prompt filling out of each item. For common schools of one teacher, items with starred numbers only are to be filled. In schools of two or more teachers the data should be collected by the Superintendent or Principal and embodied in one report. One copy is to be filed with the County Superintendent within one week after the close of school.

Name of School Warden Elementary Dist. 4 Macoupin County, Illinois

Enrollment Note: All whose names have been enrolled during the year should be reported and classified as they are at the close of the year before promotion, or at the time they have left the district.

## 1. TEACHERS AND ENROLLMENT

Elementary (See note after "Enrollment" above.)

Number of Teachers			Kinder- garten	1st Yr.	2nd Yr.	3rd Yr.	4th Yr.	5th Yr.	6th Yr.	7th Yr.	8th Yr.	Special Classes	Total
Men	Women	Total											
2	16	18	-	54	51	53	46	47	46	49	48		394

High School (See note after "Enrollment" above.)

Number of Teachers			9th Yr.	10th Yr.	11th Yr.	12th Yr.	Post Graduates and Special Classes	Total	Grand Total (Elem. and High)
Men	Women	Total							

\* 1a. How many of the above were enrolled this year in some other district of this state before enrolling in this district? Elementary 11 High School

\* 2. Length of school year in months Nine

\* 2a. Actual number of days school was in session 193  
(Same as item 4 on claim for state aid) (include holidays and institute days)

\* 3. Total days attendance of all pupils enrolled in grades kindergarten to eight inclusive 67556  
(Same as item 5 on claim for state aid)

\* 3a. Average daily attendance of all pupils enrolled in grades kindergarten to eight inclusive. (See note below 3cx) 350.03  
(Same as item 6 on claim for state aid)

\* 3x. Total days attendance of all pupils in grades kindergarten to eight inclusive, exclusive of tuition pupils 666.87  
(Same as item 5a on claim for state aid)

\* 3ax. Average daily attendance of all pupils in grades kindergarten to eight inclusive, exclusive of tuition pupils 345.53  
(Same as item 6a on claim for state aid)

NOTE: Do not allow more than 1/2 day per day for Kindergarten in items 3, 3a, 3x, 3ax.

3b. Total days attendance of all pupils enrolled in high schools  
(Same as item 5 on claim for state aid)

3c. Average daily attendance of all pupils enrolled in high school. (See note below 3cx)  
(Same as item 6 on claim for state aid)

3bx. Total days attendance of all pupils enrolled in high school, exclusive of tuition pupils  
(Same as item 5a on claim for state aid)

3cx. Average daily attendance of all pupils enrolled in high school, exclusive of tuition pupils  
(Same as item 6ax on claim for state aid)

(Note—The average daily attendance in a one-room school is found by dividing the total days attendance by the number of days the school was actually in session. In schools of two or more rooms, or in schools whose records of attendance are kept by session teachers, the average daily attendance is the sum of the average of the units composing the group. For example: The principal of a two-room school should enter in Item 3a the sum of the average of the two rooms. The superintendent of a city system of schools should enter in Item 3a the sum of the average of the various ward schools. The principal of each ward school and the principal of each high school should report the average for his school found by adding the averages of the various rooms or session groups composing the school.)

\* 4. Number of eighth grade graduates or promotions Total 45

\* 5. Number of elementary tuition pupils attending the school Total 5

6. Number of high school graduates (Four year) Boys Girls Total

7. Number of high school tuition pupils attending this school Total

\* 8. Number of school buildings in the district used by elementary school Public 2 Rented Total 2

8a. Number of school buildings in the district used by high school Public Rented Total

\* 14. Number of libraries 1

\* 14a. Number of volumes in libraries exclusive of supplementary reading books for class use 2397

16. No. of private schools in district No. of teachers, Men Women Total

Enrollment	Kindergarten		Grades 1-8		Grades 9-12		Total	
	Boys	Girls	Boys	Girls	Boys	Girls	Boys	Girls

17. Health, Special Education and Attendance: No. of nurses employed 1 Physicians Is complete physical exam. required of all pupils at least once every 4 years? yes (Yes or No). No. of students given physical exam. this year 104 NO. OF

HANDICAPPED (determined by physician, nurse or teacher) Crippled 1 Epileptic Cardiac T. B. (Active)  
T. B. (Arrested) Deaf Hard of Hearing Blind Vision Speech

NO. ENROLLED IN SPECIAL EDUCATION CLASSES or services established or maintained by your district: Vision 1  
Hearing 1 Speech 1 Other physically handicapped 1

(IMPORTANT—Three items to be filled are on back of this sheet)

(OVER)

107. SPECIAL REPORT IF A CONSOLIDATED SCHOOL

(a) Dist. No.....; (b) Number of Districts consolidated.....; (c) Are the grade school pupils all assembled in one building?  
.....; If not, in how many buildings?.....; Area in square miles.....; (e) Number of teachers: Elementary  
.....; High School.....; (f) Number of students: Elementary.....; High School.....; (g) Check  
Vocational Subjects taught: Agriculture.....; Manual Training.....; Sewing.....; Cooking.....;  
(h) Transportation furnished by district. Yes.....; No.....

108. SPECIAL REPORT ON PUBLIC SCHOOL KINDERGARTENS

(a) Number in district.....; (b) Enrollment: Boys.....; Girls.....; (c) Number teachers.....;  
(d) Salaries of teachers \$.....; (e) Current expenses for year \$.....

Blanks furnished by VERNON L. NICKELL, SUPERINTENDENT OF PUBLIC INSTRUCTION, Springfield, Illinois.

Other information which may be requested by County Superintendent.

Part time teachers (not substitutes)

Name	Subject
.....	.....
.....	.....
.....	.....
.....	.....
.....	.....
.....	.....
.....	.....
.....	.....

Teacher's Annual Report

FOR

*Virden Elementary* School  
District No. *4* *Masserpin* County,  
Illinois, for school year ending June 30, 1947.

Building is in Township *12* Range *6*

School closed *May 28*, 1947  
Made by *Harold Stults*  
*Virden Illinois* Teacher or Principal P. O.

Filed \_\_\_\_\_, 1947

Co. Supt.



107. CONSOLIDATED DISTRICTS

Dist. No.	TYPE OF DISTRICT			No. of Districts Cons.	ENROLLMENT	
	Elem.	Secondary	Unit		Elementary	Secondary

108. PUBLIC SCHOOL KINDERGARTENS

IS KINDERGARTEN MAINTAINED? (Yes or No)	ENROLLMENT
No	

109. EMPLOYEES

No. Full Time Teachers 17 Total Salaries 30500 Average Salary 1794

OTHER EMPLOYEES

	FULL TIME	PART TIME
Operation (Janitors, Engineers, Etc.)	2	
Maintenance (Carpenters, Painters, Etc.)		
Clerks		
Stenographers		
Accountants		
Bus Drivers		
Cafeteria		
Others		
TOTAL	2	

Other information which may be requested by County Superintendent.

Part time teachers (not substitutes)

Name

W. E. Best

Subject

Band and vocal music

Teacher's Annual Report

FOR

Virden Elementary School

District No. 4 Macomb County, Illinois, for school year ending June 30, 1948.

Building is in Township 12 Range 6

School closed May 27, 1948

Made by

Harold Stults Teacher or Principal

P. O.

Filed

Co. Supt.

Blanks furnished by VERNON L. NICKELL  
SUPERINTENDENT OF PUBLIC INSTRUCTION  
Springfield, Illinois.

# TEACHER'S ANNUAL REPORT

SCHOOL YEAR 1948-1949

To the Teacher or Superintendent: The State and National authorities need and demand all the data called for in this report. You are rendering a valuable service by a careful and prompt filling out of each item. For common schools of one teacher, items with starred numbers only are to be filled. In schools of two or more teachers the data should be collected by the Superintendent or Principal and embodied in one report. One copy is to be filed with the County Superintendent within one week after the close of school.

Name of School Virden Elementary Dist. No. 4 Macoupin County, Illinois

Enrollment Note: All whose names have been enrolled during the year should be reported and classified as they are at the close of the year before promotion, or at the time they have left the district.

## 1. TEACHERS AND ENROLLMENT

Elementary (See note after "Enrollment" above.)													
Number of Teachers			Kinder- garten	1st Yr.	2nd Yr.	3rd Yr.	4th Yr.	5th Yr.	6th Yr.	7th Yr.	8th Yr.	Special Classes	Total
Men	Women	Total											
2 2 1/2	17 16 1/2	19	0	76	58	45	53	58	53	37	52	1	433

High School (See note after "Enrollment" above.)									
Number of Teachers			9th Yr.	10th Yr.	11th Yr.	12th Yr.	Post Graduates and Special Classes	Total	Grand Total (Elem. and High)
Men	Women	Total							

\* 1a. How many of the above were enrolled this year in some other district of this state before enrolling in this district? Elementary 8 High School           

\* 2. Length of school year in months 9

\* 2a. Actual number of days school was in session 186  
(Same as item 4 on claim for state aid) (include holidays and institute days)

\* 3. Total days attendance of all pupils enrolled in grades kindergarten to eight inclusive 78,806.43  
(Same as item 5 on claim for state aid)

\* 3a. Average daily attendance of all pupils enrolled in grades kindergarten to eight inclusive. (See note below 3cx) 423.69  
(Same as item 6 on claim for state aid)

\* 3x. Total days attendance of all pupils in grades kindergarten to eight inclusive, exclusive of tuition pupils 78,806.43  
(Same as item 5a on claim for state aid)

\* 3ax. Average daily attendance of all pupils in grades kindergarten to eight inclusive, exclusive of tuition pupils 423.69  
(Same as item 6a on claim for state aid)

NOTE: Do not allow more than 1/2 day per day for Kindergarten in items 3, 3a, 3x, 3ax.

3b. Total days attendance of all pupils enrolled in high schools             
(Same as item 5 on claim for state aid)

3c. Average daily attendance of all pupils enrolled in high school. (See note below 3cx)             
(Same as item 6 on claim for state aid)

3bx. Total days attendance of all pupils enrolled in high school, exclusive of tuition pupils             
(Same as item 5a on claim for state aid)

3cx. Average daily attendance of all pupils enrolled in high school, exclusive of tuition pupils             
(Same as item 6ax on claim for state aid)

(Note—The average daily attendance in a one-room school is found by dividing the total days attendance by the number of days the school was actually in session. In schools of two or more rooms, or in schools whose records of attendance are kept by session teachers, the average daily attendance is the sum of the average of the units composing the group. For example: The principal of a two-room school should enter in item 3a the sum of the average of the two rooms. The superintendent of a city system of schools should enter in item 3a the sum of the average of the various ward schools. The principal of each ward school and the principal of each high school should report the average for his school found by adding the averages of the various rooms or session groups composing the school.)

\* 4. Number of eighth grade graduates or promotions            Total 52

\* 5. Number of elementary tuition pupils attending the school            Total none

6. Number of high school graduates (Four year)            Boys            Girls            Total           

7. Number of high school tuition pupils attending this school            Total           

\* 8. Number of school buildings in the district used by elementary school 2 Public 2 Rented            Total 2

8a. Number of school buildings in the district used by high school            Public            Rented            Total           

8b. How many of above teachers were supervisors or assistant principals? Elementary 2 High School           

\* 14. Number of libraries 2 14a. Number of volumes in libraries 756

16. No. of private schools in district, Elementary none Secondary none Total none

Enrollment	GRADES K'D'G-8		GRADES 9-12		TOTAL	
	Boys	Girls	Boys	Girls	Boys	Girls
Teachers	Men 2 1/2	Women 16 1/2	Men	Women	Men	Women

## 17. HEALTH, SPECIAL EDUCATION AND ATTENDANCE:

	FULL TIME	PART TIME
Nurses		
Physicians		
Dentists		

Is physical exam. required every four years? yes  
(Yes or No)  
No. given physical exam. this year 133  
No. truant officers paid by district 1  
Age certificates issued none

NO. OF PHYSICALLY HANDICAPPED (Determined by Nurse, Physician or Teacher)

Crippled <u>3</u>	Cardiac	T.B. (Arrested)	Hard of Hearing <u>3</u>	Vision* <u>43</u>	No. Enrolled in Special Educational Classes in Your District	
Epileptic	T.B. (Active)	Deaf	Blind	Speech <u>23</u>	Vision	Speech
					Hearing	Others <u>Spastic</u>

(IMPORTANT—Three items to be filled are on back of this sheet)  
(OVER)

\*Being corrected

107. CONSOLIDATED DISTRICTS

Fill in only if your district has been consolidated the entire school year.

Dist. No.	TYPE OF DISTRICT			No. of Districts Cons.	ENROLLMENT	
	Elem.	Secondary	Unit		Elementary	Secondary

108. PUBLIC SCHOOL KINDERGARTENS

IS KINDERGARTEN MAINTAINED? <i>NO</i> (Yes or No)	ENROLLMENT

109. EMPLOYEES This information is important. Please be exact.

No. Full Time Administrators *3 1/2* Total Salaries *2650* Average Salary \_\_\_\_\_  
 No. Full Time Teachers *19* Total Salaries *35825* Average Salary *2000*  
 (Include Deductions)

OTHER EMPLOYEES

	FULL TIME	PART TIME
Operation (Janitors, Engineers, Etc.)	<i>2</i>	
Maintenance (Carpenters, Painters, Etc.)		
Clerks		
Stenographers		
Accountants		
Bus Drivers		<i>1 private car</i>
Cafeteria		
Others		
TOTAL		

Other information which may be requested by County Superintendent.

Part time teachers (not substitutes)

Name *WE BEST*  
*SHIRLEY WHITE*

Subject *MUSIC*  
*ART*

Teacher's Annual Report

FOR

*Virden Grade* School  
 District No. *14* *Macoupin* County,  
 Illinois, for school year ending June 30, 1949.

Building is in Township *12* Range *6 N*

School closed *May 26*, 1949  
 Made by

*L. E. Hamberger* Teacher or Principal

*Virden, Ill.* P. O.

Filed \_\_\_\_\_, 1949

Co. Supt.

Blanks furnished by VERNON L. NICKELL  
 SUPERINTENDENT OF PUBLIC INSTRUCTION  
 Springfield, Illinois.





**HIGH SCHOOL REPORT**

For the year ending June 30, 1917.

Name of District Winden No. 4

Township 12 Range 6, 11

This report was made out by

Address Elvade Stone  
Winden, Ill.  
Superintendent.

Filed 1917

County Superintendent.

Filed 1917

Superintendent of Public Instruction.

ILLINOIS PRINTING CO., DANVILLE, ILL.

**INSTRUCTIONS**

The superintendents or principals of districts or townships maintaining a high school of one or more years are to fill out this blank in duplicate; one copy to be filed with the school records, the other copy forwarded to the county superintendent, who shall transmit the same to the Superintendent of Public Instruction by July 1.

Especial care should be taken in preparing the various items, as follows:

Item 6.—Note that the number of units of work, not years of work, is to be given.

Item 7.—The salaries of all persons doing any high school work must be charged in full to the high school.

Item 8.—No teacher should be counted more than once.

Item 12 (a).—This should be left blank when the same building is occupied by both high school and grades.

Item 12 (b).—Should always be filled in.

Items 15-17. In case the high school and the grades occupy the same building, the amount to be apportioned to the high school may be estimated by noting the proportional amount of floor space occupied by the high school. The number of class-rooms occupied by the high school and the grades, respectively, often affords a convenient method of obtaining the proportion desired. In case this method proves inexpedient, a division based on relative attendance will be acceptable.

## ROBERT C. MOORE

COUNTY SUPERINTENDENT  
OF SCHOOLS

MACOUPIN COUNTY

CARLINVILLE, ILLINOIS, Feb. 2, 1914.

The following figures are taken from the tax books upon which the taxes now being collected are based:

## District No. 4, Virden City School,

## Assessed valuation,

Lands,	\$ 74,348.
Lots,	310,410.
Personal Property,	196,415.
Railroads,	168,792.
Telephone & Teleg.,	2,180.
TOTAL,	<u>\$752,145.</u>

## Levies made in 1913,

Building Fund,	\$ 5,000.
----------------	-----------

Rate,

68¢ on the \$100.00.

General Educational	11,000.
---------------------	---------

Rate,

\$1.50 on the \$100.00..

Total Levy,	\$ 16,000.
-------------	------------

Total rate,

\$2.18 on the \$100.00.

## District No. 180, Virden Township High School,

## Assessed Valuation,

Lands,	\$270,902.	270,902.
Lots,	310,410.	310,410.
Personal Property,	238,378.	238,378.
Railroads,	180,972.	180,972.
Telephone & Teleg.,	3,442.	3,442.
TOTAL,	<u>1,004,104.</u>	<u>1,004,104.</u>

No levies yet made for school purposes.

FRANCIS G. BLAIR  
SUPERINTENDENT

State of Illinois  
Office of the Superintendent of Public Instruction  
Springfield

December 22, 1930

#4

Board of Education,  
Elementary School District,  
Virden, Illinois.

Dear Sirs:

December 18th, in company with County Superintendent Wilhite, a brief inspection of your elementary schools was made. Since our visit of last year an amount equivalent to \$100 has been spent or will be spent this year.

It was disappointing that the walls and ceilings at the Central building have not been redecorated but I hope this will be done during the next summer vacation.

We found no room over crowded. In fact the enrollment in quite a number of your rooms is very small in comparison with the enrollment of years ago.

We found good order in all of the rooms and a splendid spirit of cooperation on the part of Superintendent Chapman, teachers and children. You are having a successful year.

Sincerely yours,

Assistant Superintendent  
W. S. Booth

WBT:HAS

February 23, 1944

Members of the Board of Directors  
School District #7  
Virden, Illinois

Gentlemen:

On the fifteenth of January I visited the Union School, District #7. Your teacher, Mrs. Merrill Sprague, is very well qualified for her work. I think she is doing an excellent job and I hope you will be able to retain her as a teacher, as it is not an easy matter to get experienced teachers at the present time.

I want to congratulate you upon the way you have kept your school on the recognized list. You have a very well equipped school, and I am sure it meets the needs of your community. The furnace and electric lights are a very valuable addition; the children appreciate them, I know. I am also glad to know that you have purchased the Pupils' Reading Circle books from the State Reading Circle Board. I hope you will order them every year, as they are the cheapest and best books that you can buy.

There are a few suggestions that I would like to make, so that when you get the money you will be able to take care of them. You need about a half dozen book-size dictionaries. These should be purchased as soon as possible. You also need a set of physiology charts as an aid in the teaching of health. A work table and some small chairs would be a great help to the little folks in their construction work. A few pictures would help in decorating the room.

Your floors are in bad shape, and I suggest that you have them resanded and then sealed and waxed. This will make it much easier to keep them clean. The roof has a small leak in it which should be repaired, or, if possible, a new roof should be put on the building. I also have a report from the Department of Health regarding your well. It seems as though this is one of your big problems, and should be taken care of at once.

Very truly yours,

I. K. Juergensmeyer  
County Superintendent of Schools

ROLAND R. CROSS, M. D.  
DIRECTOR

STATE OF ILLINOIS  
DWIGHT H. GREEN, Governor  
DEPARTMENT OF PUBLIC HEALTH  
SANITARY ENGINEERING LABORATORIES  
SPRINGFIELD

WILLIAM J. DOWNER,  
CHIEF SANITARY ENGINEER  
EUGENE S. CLARK,  
BACTERIOLOGIST  
JAMES G. WEART, JR.,  
CHEMIST

SANITARY ANALYSIS OF WATER FROM VIRGEN (Macoupin County) SCHOOL SUPPLY

Source 25' dug well, pump, Union School, District #7

Date collected November 16, 1943

Collected by H. C. Krause For \_\_\_\_\_

Remarks "taste" iron"

Laboratory No. 272889

Sediment 0

Turbidity 0

Odor 0

Nitrite nitrogen

~~IRON~~ .70

Bacteria per ml. 2400

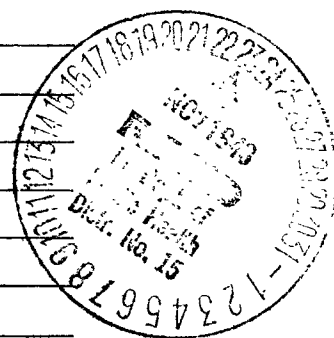
Coli-type bacteria:

In portions of 10 ml.

Presumptive tests

Confirmatory tests

Number per 100 ml. (M P N) \_\_\_\_\_



The above analysis indicates that the water was contaminated and was unsafe for drinking purposes at the time of sample collection. This well appears to be properly located and constructed and should be expected to deliver a water of safe quality. However, constructional contamination may have been introduced into the well at the time of construction. Therefore, we recommend that the well be again sterilized with strong solution of chlorine as outlined on page 23 of the well bulletin being sent to you under separate cover. After the chlorine is added to the water the pump should be operated until the odor of chlorine is detected from the pump. It should then be left idle for a period of eight hours, after which the water should be pumped to waste until the odor has completely disappeared. You may then request another sample container for a check analysis from the Department of Public Health, Division of Sanitary Engineering, Springfield.

Original to: Board of Directors  
cc: Mrs. Merrill Sprague  
Mr. I. K. Juergensmeyer

*H. C. Krause*  
Assistant Sanitary Engineer

Submitted thru:

*W. J. Broad*  
W. J. Broad, M. D.  
District Health Superintendent

## CONCERNING THIS SANITARY ANALYSIS

The statements on the reverse side are based not only on the analytical results, but also on the description of the source as furnished by you or already on file in this office. It is further recommended as follows:

- (a) **If the water is unsafe to drink**, abandon the supply for one of known safety or bring the water to a boil before use, until the suggested improvements have made the supply safe.
- (b) If the source is not satisfactory, make the suggested improvements immediately.
- (c) If the water is safe, take care to keep it safe by protecting the supply against contamination.

A laboratory examination of the water has been made to show the presence or absence of waste matter of human or animal origin. If the water is contaminated by surface wash or sewage, then parasitic intestinal worms, amebic cysts or germs of intestinal diseases, such as cause bowel complaint, diarrhea, dysentery or typhoid fever, may be present in the water, thus endangering the health of persons drinking the water. The analytical terms and results are briefly explained as follows:

**Physical and Chemical Tests: "Sediment" through "Chloride."** A desirable water has an attractive appearance (no sediment or turbidity) and has no objectionable odor or taste. Chemical results are given in parts per million (ppm).

**Bacteriological Tests: "Bacteria per ml."** indicates the number of microorganisms present in one milliliter (ml.) of water (20 drops) and the number which grew in standard nutrient agar at body temperature (37°C or 98.6°F). These bacteria may not be of intestinal origin and therefore may not be of sanitary importance. Occasionally the test plates are overcrowded so that no bacterial count can be obtained. In such a case the report shows "Innumerable" indicating more than 10,000 bacteria per ml.

**"Coli-type bacteria" "Presumptive Tests" "Confirmatory Tests":** A water containing bacteria of intestinal origin (*E. coli* and *A. aerogenes*, also known as "coliform" bacteria), if placed in a sugar broth (lactose), will cause fermentation and production of gas in 24 or 48 hours. By means of further laboratory tests the presence of these bacteria in 10 ml. portions is indicated by a +, their absence by a —. The numeral preceding the sign shows the number of portions giving that result.

Example: 2+3— indicates that two 10 ml. portions of the sample did show and three portions did not show coli-type bacteria present.

**After receipt of the sample** in the laboratory it requires from two to six days to complete the sanitary or bacteriological analysis.

SIONITI